

RANCHO MURIETA COMMUNITY SERVICES DISTRICT

RESOLUTION NO. 88-16

RESOLUTION OF THE BOARD OF DIRECTORS OF  
RANCHO MURIETA COMMUNITY SERVICES DISTRICT  
CONCERNING DISTRICT ORGANIZATIONAL STRUCTURE

WHEREAS, the District's organization structure and compensation schedule has heretofore been set forth in Resolution 85-8, 86-5, and, 88-10, and

WHEREAS, the Board of Directors desires to change that structure and schedule;

NOW THEREFORE, the Board of Directors of Rancho Murieta Community Services District resolves as follows:

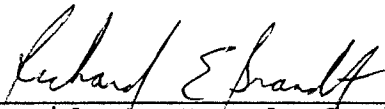
That the organization chart shown on the Attached Exhibit A is hereby adopted, and;

That the compensation schedule shown on the attached Exhibit B remains unchanged from what was approved by Resolution 88-10, and;

That the occupation classification plan on the attached Exhibit C is hereby adopted.

PASSED AND ADOPTED this 19th day of October, 1988 by the following roll call vote:

AYES: Directors: Brandt, Devlin, Wegner, Eby  
NOES: None  
ABSENT: Director: Simpson  
ABSTAIN: None

  
\_\_\_\_\_  
President, Board of Directors  
Rancho Murieta Community Services  
District

ATTEST:


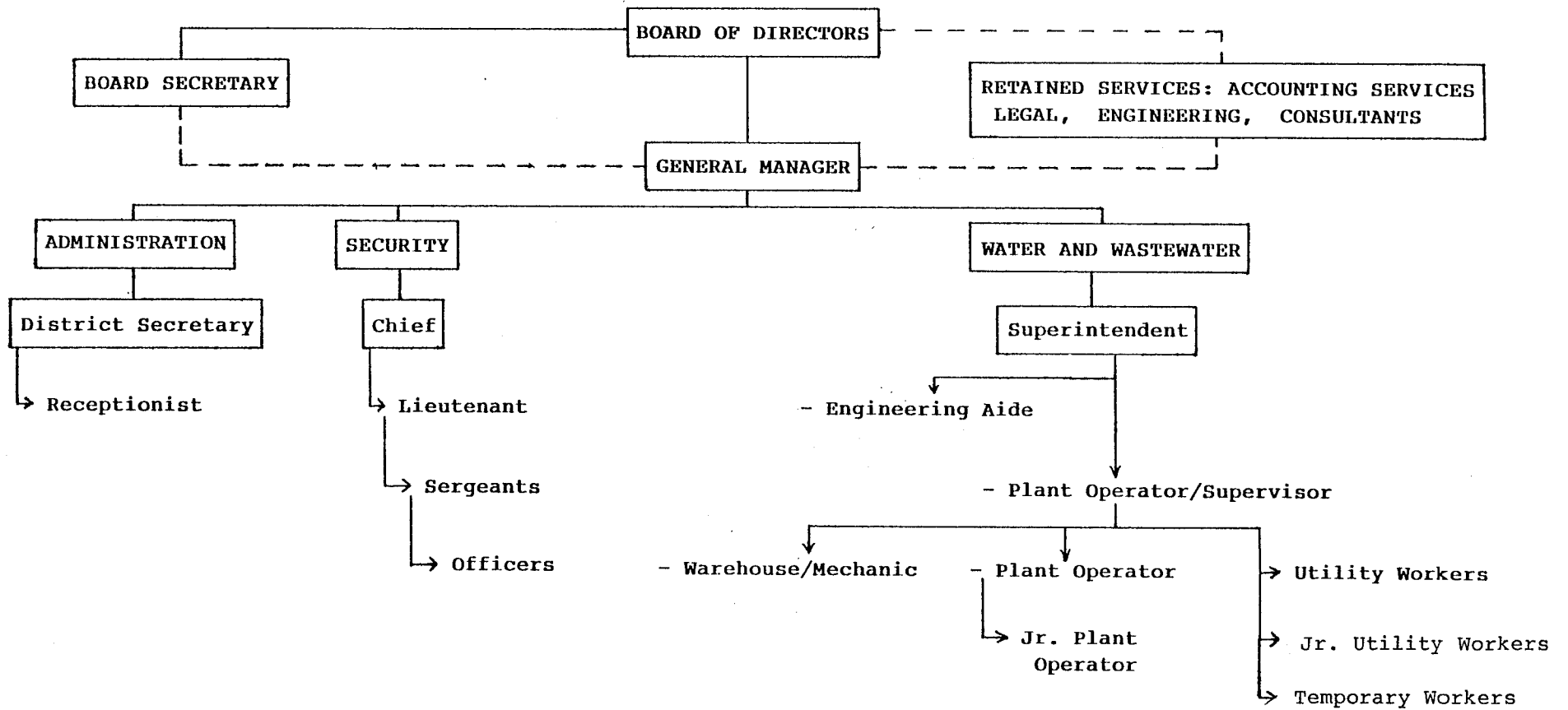
  
\_\_\_\_\_  
Secretary of the Board of Directors  
Rancho Murieta Community Services District



EXHIBIT A

RANCHO MURIETA COMMUNITY SERVICES DISTRICT  
ORGANIZATIONAL CHART  
OCTOBER 19, 1988



**EXHIBIT B**  
**COMPENSATION SCHEDULE**  
**GRADE AND STEP**

HOURLY	BI-WEEKLY											MONTHLY	ANNUALLY
6.73	538.40	10-1										1.166.53	13,998.40
6.90	551.86	10-2										1.195.70	14,348.36
7.07	565.66	10-3	11-1									1.225.59	14,707.07
7.25	579.80	10-4	11-2									1.256.23	15,074.75
7.43	594.29	10-5	11-3	12-1								1.287.63	15,451.61
7.61	609.15	10-6	11-4	12-2								1.319.83	15,837.90
7.80	624.38	10-7	11-5	12-3	13-1							1.352.82	16,233.85
8.00	639.99	10-8	11-6	12-4	13-2							1.386.64	16,639.70
8.20	655.99	10-9	11-7	12-5	13-3	14-1						1.421.31	17,055.69
8.40	672.39	10-10	11-8	12-6	13-4	14-2						1.456.84	17,482.08
8.61	689.20	10-11	11-9	12-7	13-5	14-3	15-1					1.493.26	17,919.14
8.83	706.43	10-12	11-10	12-8	13-6	14-4	15-2					1.530.59	18,367.11
9.05	724.09	10-13	11-11	12-9	13-7	14-5	15-3	16-1				1.568.86	18,826.29
9.28	742.19	10-14	11-12	12-10	13-8	14-6	15-4	16-2				1.608.08	19,296.95
9.51	760.75	10-15	11-13	12-11	13-9	14-7	15-5	16-3	17-1			1.648.28	19,779.37
9.75	779.76		11-14	12-12	13-10	14-8	15-6	16-4	17-2			1.689.49	20,273.86
9.99	799.26		11-15	12-13	13-11	14-9	15-7	16-5	17-3	18-1		1.731.73	20,780.70
10.24	819.24			12-14	13-12	14-10	15-8	16-6	17-4	18-2		1.775.02	21,300.22
10.50	839.72	19-1		12-15	13-13	14-11	15-9	16-7	17-5	18-3		1.819.39	21,832.73
10.76	860.71	19-2			13-14	14-12	15-10	16-8	17-6	18-4		1.864.88	22,378.54
11.03	882.23	19-3	20-1		13-15	14-13	15-11	16-9	17-7	18-5		1.911.50	22,938.01
11.30	904.29	19-4	20-2			14-14	15-12	16-10	17-8	18-6		1.959.29	23,511.46
11.59	926.89	19-5	20-3	21-1		14-15	15-13	16-11	17-9	18-7		2.008.27	24,099.25
11.88	950.07	19-6	20-4	21-2			15-14	16-12	17-10	18-8		2.058.48	24,701.73
12.17	973.82	19-7	20-5	21-3	22-1		15-15	16-13	17-11	18-9		2.109.94	25,319.27
12.48	998.16	19-8	20-6	21-4	22-2			16-14	17-12	18-10		2.162.69	25,952.25
12.79	1,023.12	19-9	20-7	21-5	22-3	23-1		16-15	17-13	18-11		2.216.75	26,601.06
13.11	1,048.70	19-10	20-8	21-6	22-4	23-2			17-14	18-12		2.272.17	27,266.08
13.44	1,074.91	19-11	20-9	21-7	22-5	23-3	24-1		17-15	18-13		2.328.98	27,947.74
13.77	1,101.79	19-12	20-10	21-8	22-6	23-4	24-2			18-14		2.387.20	28,646.43
14.12	1,129.33	19-13	20-11	21-9	22-7	23-5	24-3	25-1		18-15		2.446.88	29,362.59
14.47	1,157.56	19-14	20-12	21-10	22-8	23-6	24-4	25-2				2.508.05	30,096.65
14.83	1,186.50	19-15	20-13	21-11	22-9	23-7	24-5	25-3	26-1			2.570.76	30,849.07
15.20	1,216.17		20-14	21-12	22-10	23-8	24-6	25-4	26-2			2,635.02	31,620.30
15.58	1,246.57		20-15	21-13	22-11	23-9	24-7	25-5	26-3	27-1		2,700.90	32,410.81
15.97	1,277.73			21-14	22-12	23-10	24-8	25-6	26-4	27-2		2,768.42	33,221.08
16.37	1,309.68			21-15	22-13	23-11	24-9	25-7	26-5	27-3		2,837.63	34,051.60
16.78	1,342.42				22-14	23-12	24-10	25-8	26-6	27-4		2,908.57	34,902.89
17.20	1,375.98				22-15	23-13	24-11	25-9	26-7	27-5		2,981.29	35,775.46
17.63	1,410.38					23-14	24-12	25-10	26-8	27-6		3,055.82	36,669.85
18.07	1,445.64					23-15	24-13	25-11	26-9	27-7		3,132.22	37,586.60
18.52	1,481.78						24-14	25-12	26-10	27-8		3,210.52	38,526.26
18.99	1,518.82						21-15	25-13	26-11	27-9		3,290.78	39,489.42
19.46	1,556.79							25-14	26-12	27-10		3,373.05	40,476.65
19.95	1,595.71							25-15	26-13	27-11		3,457.38	41,488.57
20.45	1,635.61								26-14	27-12		3,543.82	42,525.79
20.96	1,676.50								26-15	27-13		3,632.41	43,588.93
21.48	1,718.41									27-14		3,723.22	44,678.65
22.02	1,761.37									27-15		3,816.30	45,795.62

Amended 6/15/88, 10/19/88

EXHIBIT C

RANCHO MURIETA COMMUNITY  
SERVICES DISTRICT  
OCTOBER 19, 1988

OCCUPATION CLASSIFICATION PLAN

<u>DEPARTMENT/JOB DESCRIPTION</u>	<u>OCCUPATION CLASS</u>
<u>Administration:</u>	
Receptionist	13
<u>Water and Wastewater:</u>	
Plant Operator/Field Supervisor	24
Plant Operator	19
Warehouse/Mechanic	19
Jr. Plant Operator	18
Engineering Aide	15
Utility Worker	15
Jr. Utility Worker	14
<u>Security:</u>	
Lieutenant	18
Sergeant	17
Officer II	16
Officer I	14

meetings)

- 87-16 Resolution accepting and authorizing execution of documents (easements #87-2)
- 87-17 Resolution accepting and authorizing execution of documents (easements #87/2 - 87/7)
- 88-1 Resolution of the RMCS D ordering judicial foreclosure of delinquent assessments pursuant to the Improvement Bond Act of 1915 and ordering that the tax collector be credited with those assessments.
- 88-2 A resolution setting forth a schedule of water standby or water availability charges.
- 88-3 Repealing Chapter 5 of the District Code "Personnel Manual/Rules.
- 88-4 Adopting District Personnel Manual
- 88-5 Authorizing Acceptance of Grant Deeds and Authorizing Execution of Documents.
- 88-6 Resolution proposing change in Improvement to be made. (Improvement District No. 1)
- 88-7 Resolution calling general district election.
- 88-8 Resolution ordering change in improvement to be made (Improvement District No. 1 - Warehouse)
- 88-9 Resolution concering District's 1988-89 budget
- 88-10 Resolution concerning District Organizational structure.
- 88-11 Resolution authorizing collection of Improvement District Assessments on the tax roll for the forthcoming fiscal year in the same manner as the general taxes.
- 88-12 Resolution authorizing collection and requesting inclusion of delinquent rates, charges, and penalties for water, sewer and security services on the tax roll for the forthcoming tax year.
- 88-13 Resolution amending fixed employer's contribution for public employees medical and hospital care act.
- 88-14 Resolution authorizing collection of improvement district assessments on the tax roll.