

RANCHO MURIETA  
COMMUNITY SERVICES DISTRICT

RESOLUTION NO. 85-8

Resolution of Board of Directors of  
Rancho Murieta Community Services District

Concerning District Organizational Structure  
and Compensation Schedule

WHEREAS, the organizational structure and compensation schedule have heretofore been contained in the Personnel Ordinance No. 85-3; and,

WHEREAS, after public hearing duly held, these items have been removed from the Personnel Ordinance.

NOW, THEREFORE, the Board of Directors of Rancho Murieta Community Services District resolves as follows:

That the organizational chart and compensation schedule for the Rancho Murieta Community Services District as shown on the attached Exhibits A and B respectively are hereby adopted.

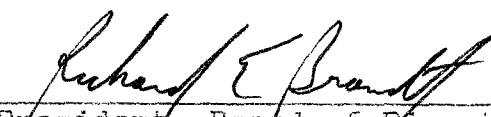
PASSED AND ADOPTED this 9th day of October, 1985, by the following roll call vote:

AYES: Brandt, Devlin, Dudley, Elliott, Marquis.


NOES: None.

ABSENT:

ABSTAIN:

  
\_\_\_\_\_  
President, Board of Directors  
Rancho Murieta Community  
Services District

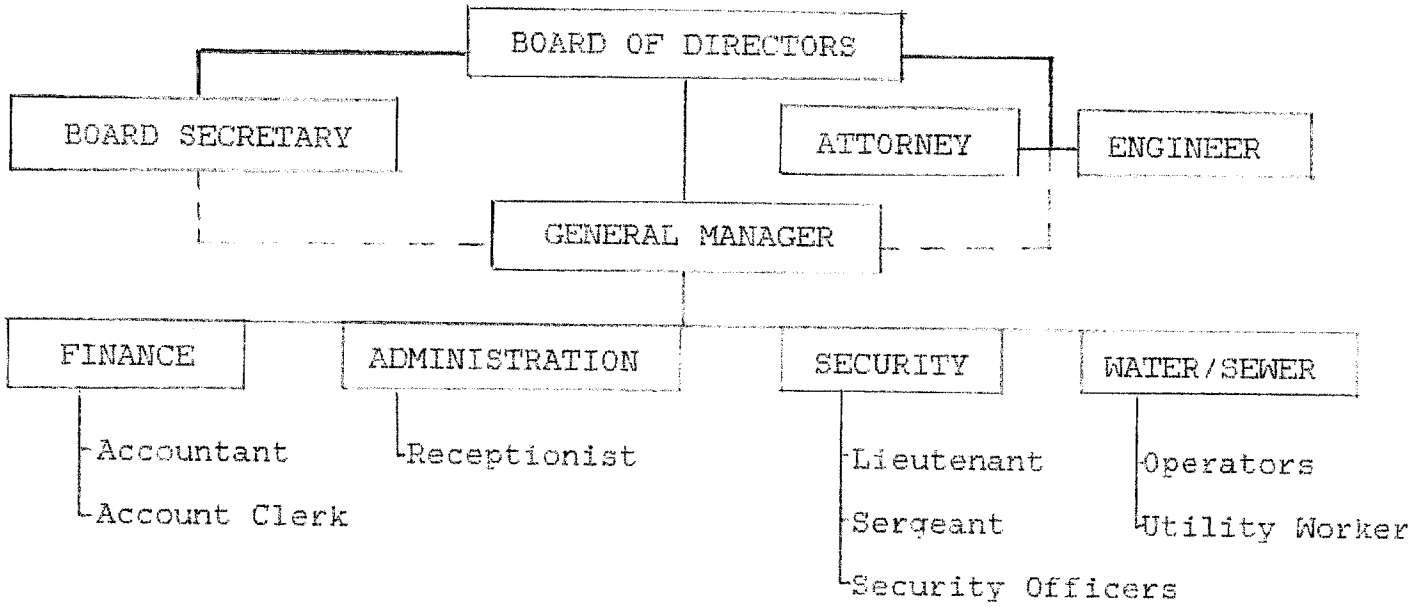
Attest:

  
\_\_\_\_\_  
Secretary, Board of Directors  
Rancho Murieta Community  
Services District

SCANNED

EXHIBIT A

RANCHO MURIETA COMMUNITY SERVICES DISTRICT  
ORGANIZATIONAL CHART  
OCTOBER 9, 1985



RANCHO MARIETA CSD

EXHIBIT B

COMPENSATION SCHEDULE

October 9, 1985

SALARY		GRADE AND STEP										APPROX. SALARY	
HOURLY	BI-WEEKLY											MONTHLY	ANNUAL
6.733	538.64	10-1										1167	14,005
6.902	552.16	10-2										1196	14,356
7.074	565.92	10-3	11-1									1226	14,714
7.251	580.08	10-4	11-2									1257	15,082
7.432	594.56	10-5	11-3	12-1								1288	15,459
7.618	609.44	10-6	11-4	12-2								1320	15,845
7.809	624.72	10-7	11-5	12-3	13-1							1354	16,243
8.004	640.32	10-8	11-6	12-4	13-2							1387	16,648
8.204	656.32	10-9	11-7	12-5	13-3	14-1						1422	17,064
8.409	672.72	10-10	11-8	12-6	13-4	14-2						1458	17,491
8.619	689.52	10-11	11-9	12-7	13-5	14-3	15-1					1494	17,928
8.835	706.80	10-12	11-10	12-8	13-6	14-4	15-2					1531	18,377
9.055	724.40	10-13	11-11	12-9	13-7	14-5	15-3	16-1				1570	18,834
9.282	742.56	10-14	11-12	12-10	13-8	14-6	15-4	16-2				1609	19,307
9.514	761.12	10-15	11-13	12-11	13-9	14-7	15-5	16-3	17-1			1649	19,789
9.752	780.16		11-14	12-12	13-10	14-8	15-6	16-4	17-2			1690	20,284
9.995	799.60		11-15	12-13	13-11	14-9	15-7	16-5	17-3	18-1		1733	20,790
10.245	819.60			12-14	13-12	14-10	15-8	16-6	17-4	18-2		1776	21,310
10.502	840.16	19-1		12-15	13-13	14-11	15-9	16-7	17-5	18-3		1820	21,844
10.764	861.12	19-2			13-14	14-12	15-10	16-8	17-6	18-4		1866	22,389
11.033	882.64	19-3	20-1		13-15	14-13	15-11	16-9	17-7	18-5		1912	22,949
11.309	904.72	19-4	20-2			14-14	15-12	16-10	17-8	18-6		1960	23,523
11.592	927.36	19-5	20-3	21-1		14-15	15-13	16-11	17-9	18-7		2009	24,111
11.881	950.48	19-6	20-4				15-14	16-12	17-10	18-8		2059	24,712
12.178	974.24	19-7	20-5		22-1		15-15	16-13	17-11	18-9		2111	25,330
12.483	998.64	19-8	20-6					16-14	17-12	18-10		2164	25,965
12.795	1023.60	19-9	20-7			23-1		16-15	17-13	18-11		2218	26,614
13.115	1049.20	19-10	20-8						17-14	18-12		2273	27,279
13.443	1075.44	19-11	20-9					24-1	17-15	18-13		2330	27,961
13.779	1102.32	19-12	20-10							18-14		2388	28,660
14.123	1129.84	19-13	20-11						25-1	18-15		2448	29,376
14.477	1158.16	19-14	20-12									2509	30,112
14.839	1187.12	19-15	20-13								26-1	2572	30,865
15.209	1216.72		20-14									2636	31,635
15.590	1247.20		20-15							27-1		2702	32,427

REVISED JULY 1, 1985  
 INCREASED BY CPI 3.74%  
 BOARD APPROVED JUNE 12, 1985