



RANCHO MURIETA COMMUNITY SERVICES DISTRICT

15160 Jackson Road, Rancho Murieta, CA 95683

Office - 916-354-3700 * Fax - 916-354-2082

IMPROVEMENTS COMMITTEE

(Directors Randy Jenco and Martin Pohl)

Special Meeting

March 5, 2021 at 2:00 p.m.

This meeting will be held via ZOOM video conference only pursuant to Gov. Newsom Executive Order N-29-20. You can join the conference by (1) logging on to <https://us02web.zoom.us/j/81851585818>, entering Meeting ID no. 818 5158 5818, and using the audio on your computer, or (2) dialing into 1-669-900-9128 and entering the meeting code 818 5158 5818. Those wishing to join with audio only can simply call the telephone number above and enter the code. Participants wishing to join the call anonymously have the option of dialing *67 from their phone. Please refer to your telephone service provider for specific instructions. **PLEASE NOTE – MOBILE DEVICE USERS MAY NEED TO INSTALL AN APP PRIOR TO USE AND MAC AND PC DESKTOP AND LAPTOP USES WILL REQUIRE YOU TO RUN A ZOOM INSTALLER APPLICATION – PLEASE FOLLOW DIRECTIONS AS PROVIDED BY ZOOM. IT IS RECOMMENDED YOU ATTEMPT TO LOGIN AT LEAST 5 MINUTES BEFORE THE START OF THE MEETING.**

AGENDA

1. Call to Order
2. Comments from the Public
3. Consider Approval for On-Call Professional Services for District Engineer and Construction Inspection Services RFP Results
4. Director and Staff Comments/Suggestions *[no action]*
5. Adjournment

"In accordance with California Government Code Section 54957.5, any writing or document that is a public record, relates to an open session agenda item and is distributed less than 24 hours prior to a special meeting, will be made available for public inspection in the District offices during normal business hours. If, however, the document is not distributed until the regular meeting to which it relates, then the document or writing will be made available to the public at the location of the meeting."

In compliance with the Americans with Disabilities Act and Executive Order No. N-29-20, if you are an individual with a disability and you need a disability-related modification or accommodation to participate in this meeting or need assistance to participate in this teleconference meeting, please contact the District Office at 916-354-3700 or awilder@rmcsd.com. Requests must be made as soon as possible.

Note: This agenda is posted pursuant to the provisions of the Government Code commencing at Section 54950. The date of this posting is March 4, 2021. Posting locations are: 1) District Office; 2) Post Office; 3) Rancho Murieta Association; 4) Murieta Village Association.

MEMORANDUM

Date: March 3, 2021
 To: Improvements Committee
 From: Paul Siebensohn, Director of Field Operations
 Subject: Consider Approval of Dominichelli & Associates for On-Call Engineering services & Construction Inspection Services

Background:

We have reviewed bids in accordance with the Request for Proposal (RFP), checked references, and reviewed costs, summarized in the review matrix below. Based on the scoring we are seeking approval to proceed with Dominichelli & Associates.

As the Coastland Engineering contract for engineering and inspection services is expiring, we developed a new Engineering and Construction Inspection services RFP and sent it out on January 8, 2021 with a due date of February 19, 2021. Four bid proposals were received. Staff has completed the process of reviewing the bids for conformance with the RFP, and the scoring of the proposals is shown below.

In the meantime, the District is continuing to utilize Coastland Engineering, whose contract is set to expire on April 21, 2021. Coastland did not rebid for Engineering services. I have reached out to Coastland to discuss the transfer of knowledge and projects. We will update this request in the Board memo if approved by the Committee to proceed with the contract.

Criteria	1 to 5 Weighting	Respondants (1-10)							
		SNG Associates		RFE; Waterworks, M.Neils, Ghirardelli,Stratus		D&A Civil Eng. Inc.; Frisch, Youngdahl, Alan Divers		Infrastructure Improvement Inc.	
		Score	Total	Score	Total	Score	Total	Score	Total
Adherence to RFP Contents & Instructions	5	20	100	20	100	20	100	18	90
Understanding Scope of Work	5	20	100	20	100	20	100	16	80
Understanding of objectives	2	20	50	20	50	20	50	20	50
Inspection services	4	20	80	15	60	20	80	17	68
Assigned Engineers Licensing in good standing	5	17	85	20	100	20	100	20	100
Personnel and Experience	3	20	60	13	39	18	54	14	42
Experience & Performance w.similar work	4	18	72	14	56	18	72	13	52
Reference checks	4	10	40	9	36	10	40	9	36
Availability	3	13	39	18	54	20	60	20	60
Engineering Rates	5	18	90	18	90	20	100	9	45
Construction inspection rates	3	20	60	18	54	15	45	16	48
		Totals:	776		739		801		671

If approved, we will proceed with issuing the District's Service Agreement for a three-year term.

**PROPOSAL FOR
ON-CALL PROFESSIONAL SERVICES FOR DISTRICT ENGINEER
AND
CONSTRUCTION INSPECTION SERVICES**



SUBMITTED BY:



Domenichelli and Associates, Inc.
5180 Golden Foothill Parkway, Suite 220
El Dorado Hills, CA 95762
PHONE: (916) 933-1997, FAX: (916) 933-4778
<http://www.daengineering.net>

MAIN PROPOSAL CONTACT:

Joe Domenichelli, President
PHONE: (916) 933-1997,
CELL: (916) 716-4207,
joed@daengineering.net



DOMENICHELLI AND ASSOCIATES, INC. CIVIL ENGINEERING

February 19, 2021

Mr. Paul Siebensohn
Director of Field Operations
Rancho Murieta Community Services District (RMCS D)
PO Box 1050
Rancho Murieta, CA 95683

Subject: Cover/commitment letter for Proposal for On-Call Professional Services for District Engineer and Construction Inspection Services

Dear Paul,

Domenichelli and Associates, Inc. (D&A) is pleased to submit the attached Proposal for RMCS D's On-Call District Engineer and Construction Inspection Services. As a local water resources firm, D&A has served municipalities throughout the State since 2002. Domenichelli & Associates (D&A) has worked closely with RMCS D on several projects since our inception and is familiar with the District's facilities, standards, and operations. During this time, we have continued to build our working relationship with the District, and we look forward to continuing this relationship.

Our point of contact will be myself, Joe Domenichelli, President at JoeD@daengineering.net. A second point of contact will be Sara Rogers, Vice President at SaraR@daengineering.net. Our address and phone numbers are:

Corporate Office:

5180 Golden Foothill Parkway, Suite 220
El Dorado Hills, CA 95762

Phone: (916) 933-1997

Sacramento Office:

3301 C Street #1000
Sacramento, CA 95816

Cell: (916) 716-4207 (Joe), or (916) 803-0012 (Sara)

Our team is comprised of 6 registered engineers and 2 engineers-in-training/staff engineers at D&A, electrical engineering support from Frisch Engineering and ATEEM, geotechnical engineering support from Youngdahl & Associates and Blackburn Consulting, surveying from Area West and Alan Divers PLS, and corrosion analysis and design from JDH Corrosion Consultants. Environmental compliance can be provided by EN2 Resources if needed. We have worked successfully with each of our sub-consulting firms and as small to mid-sized firms, our companies will provide focused and cost-effective services with significant principal involvement on all of our District on-call projects.

As Principle in Charge of these efforts, I will also act as the District Engineer for RMCS D. These duties will include tasks such as; making presentations to the Board; assisting in financial planning to include benefit assessment planning and rate and fee studies; attending special meetings to address future development plans in the Rancho North area; and providing general oversight and quality control for all services provided by the D&A team.

We have thoroughly reviewed the Request for Proposal and we are confident that the team we have assembled can provide services for every type of engineering service described in these documents. At D&A we pride ourselves in maintaining a group of engineers that have backgrounds in a wide variety of engineering practices. We also have the specialists to be a full service, civil, mechanical and structural



DOMENICHELLI AND ASSOCIATES, INC. CIVIL ENGINEERING

engineering firm with added expertise in permitting, rate and fee structure development, Board presentations, construction management and complete inspection services. You will see in our proposal that we have a strong understanding of the District's needs and will provide the right team of highly qualified staff to complete your projects.

D&A and our sub-consultants are committed to deliver services in a timely, cost effective manner and we have the necessary staff and resources available to perform these services over the 3-year contract period and beyond. We are excited to have this opportunity to propose as your On-Call consultant. We look forward to continued project successes with RMCSO.

If you have any questions or require additional information, please do not hesitate to contact myself or Sara Rogers.

Sincerely,

A handwritten signature in black ink, appearing to read 'Joe Domenichelli', written over a white background.

Joe Domenichelli, P.E. – President,
Domenichelli and Associates, Inc.



RANCHO MURIETA COMMUNITY SERVICES DISTRICT
Proposal for On-Call Professional Services for District Engineer
and Construction Inspection Services

TABLE OF CONTENTS

Table of Contents i

Section 1: Statement of Work 2

Section 2: Relevant Experience and Expertise 4

 Relevant Experience..... 6

Section 3: Project Team 9

Section 4: Quality Assurance/ Control; Conflicts..... 15

Section 5: On-Call Experience References..... 15

Section 6: Contract Requirements 16

Section 7: Insurance Requirements..... 16

Resumes



RANCHO MURIETA COMMUNITY SERVICES DISTRICT

Proposal for On-Call Professional Services for District Engineer and Construction Inspection Services

TECHNICAL PROPOSAL

SECTION 1: STATEMENT OF WORK

A. District Engineering, Design Services, and Technical Support

Domenichelli & Associates (D&A) is a local civil engineering firm specializing in water resources, serving the region for the past 18 years. This statement of work will describe our understanding of the District facilities, the services needed, and our approach towards providing these services. We have enjoyed working with RMCS D staff on several engaging projects in the past and we are committed to continue providing the highest level of service to the District.

District Engineering

With **Joe Domenichelli** heading up the District Engineering efforts, the D&A team will provide District Engineering services to include:

- General engineering consultation as requested for District water, wastewater, recycled water, and drainage systems.
- Assistance with benefit/assessment plans, and rate and fee structure formulation and updates.
- Assistance in preparation of capital improvement plans and infrastructure financing programs.
- Process and track permits required for District projects.
- Assure adherence to District codes, ordinances, and specification by the D&A team an any outside engineering firms representing new development interests within the community.
- Prepare for and attend Board meetings to present on specific project updates and to discuss other agenda items requiring engineering expertise.

All of the D&A staff identified in this proposal will be available to support Mr. Domenichelli in

performing the District Engineering services described above.

Project Designs

Our approach to the design process begins with the preparation of a Preliminary Design Report (PDR). This report establishes design criteria, provides basic alignments and site layouts, discusses environmental and right-of-way constraints, identifies permitting needs and special construction issues, and establishes a preliminary schedule and budget for the project. The PDR provides guidelines for the design of the project before any design documents are formulated. This helps avoid unnecessary re-design efforts and misunderstandings of the project goals and features between design team members.

D&A has a good template for the design process, and we have a strong understanding of the type of design challenges, such as utility conflicts, maintenance of existing facilities during construction, access, and traffic control that are typically encountered. We are also sensitive to the level of public awareness and involvement required for improvement projects within the District's service area. Our knowledge of the District's existing systems gives D&A the ability to efficiently complete designs.

As you will see under our Statement of Qualifications, the D&A team has the relevant experience to meet the needs of RMCS D's design and design related services for every design project type listed in the RFP. The following is a summary of the types of work we anticipate and the D&A team members with the experience to provide these design services.



RANCHO MURIETA COMMUNITY SERVICES DISTRICT

Proposal for On-Call Professional Services for District Engineer and Construction Inspection Services

List of Potential Design Services and Assigned Staff

Potential Design Service	Typical Staff Member Assigned
Treatment Plant, River Intake Upgrades	Joe Domenichelli, Sara Rogers, Daryl Heigher, Jim Cade
Pump Stations, Lift Stations and Tanks	Joe Domenichelli, Daryl Heigher, Adam Motiejunas, Matt Domenichelli, Jim Cade
Pipelines and Appurtenances	Sara Rogers, Tom Dugan, Adam Motiejunas, Juana Tellez, Bryon Deubel, Jim Cade
Storm Drains and Ponds	Brian Hammer, Bryon Deubel, Matt Domenichelli
Water Wells	Joe Domenichelli, Sara Rogers, Daryl Heigher, Juana Tellez, Jim Cade
Reservoir Improvements	Joe Domenichelli, Brian Hammer, Matt Domenichelli
Structural Design	Daryl Heigher, Jim Cade
Civil -Grading/Drainage/Paving	Joe Domenichelli, Tom Dugan, Juana Tellez, Jim Cade
Electrical Design	Frisch Engineering, A.T.E.E.M.

See Project Team Section 3 for qualifications of individual staff members

Technical Services and Support

D&A has several highly qualified engineers to provide technical engineering and support to the District. The following is a list of services provided along with in-house staff available to complete various technical services and support efforts.

- Review of submitted studies, plans and specifications for extension of District facilities and development plans from various private firms representing new development within the District, in particular the Rancho North Area. **(Joe Domenichelli, Tom Dugan, Brian Hammer, Bryon Deubel)**
- Hydraulic analyses of treatment plants, water conveyance facilities, and storm drain systems for District improvement projects. **(Brian Hammer, Adam Motiejunas, Matt Domenichelli)**
- Feasibility Studies for compliance with small non-traditional MS4, wastewater systems general permit, water treatment expansion, water and wastewater storage facilities and wastewater reclamation permitting. **(Sara Rogers, Brian Hammer, Juana Tellez)**
- Structural analyses for hydraulic structures, buildings, and miscellaneous foundations. **(Daryl Heigher)**
- Identification of permitting agencies and their requirements for District projects. **(Sara Rogers, Juana Tellez)**
- Updating District development standards, standard plans and standard specifications. **(Joe Domenichelli, Tom Dugan, Jim Cade)**
- Project Cost estimating for capital improvement projects ad special consulting services **(Joe Domenichelli, Tom Dugan, Adam Motiejunas)**

These types of deliverables are often in the form of a formal report or, at the request of the District, can be a shorter technical memorandum. For development reviews the deliverables will typically be a formal letter of comments to be submitted on District letterhead. District standard plan updates will be completed in AutoCAD. D&A has the sub-consulting team members to complete necessary surveying, geotechnical studies, and electrical analyses including SCADA communications and Arc flash studies.

Bidding and Engineering Services During Construction

With D&A’s extensive construction management experience we have a clear understanding of the construction challenges, time constraints, and public awareness associated with public infrastructure projects. D&A has the



RANCHO MURIETA COMMUNITY SERVICES DISTRICT

Proposal for On-Call Professional Services for District Engineer and Construction Inspection Services

necessary field and office experience during construction to effectively provide the support service required by the District. Our engineers have extensive experience in the field and working closely with construction contractors. Again, communication is the key and our approach will always include methods to improve communication through regular construction

meetings, e-mailing, proper log keeping, and every attempt to maintain a friendly working environment. We anticipate that our engineers will periodically visit construction sites on behalf of the District to ensure that the construction is meeting the requirements of the contract documents.

B. On-Call Construction Inspection Services

Whether or not D&A provides a Construction Manager (CM), our construction inspection team will be available with extensive experience to conform to any construction management process desired by the District. Our inspectors all have more than 20 years of experience constructing and inspecting water and wastewater public infrastructure projects, with three of them having previous careers as contractors. Our approach to providing on-call construction inspection services will be to gain a clear understanding of the scope of the project, as well as considering past working relationships with the selected contractor (when appropriate) in order to best utilize our inspection staff.

Typical construction inspections services include:

- Full or part time (as desired by the District) on-site review of the construction for compliance relative to the contract construction documents, any permit requirements and all safety rules and regulations.
- Attending pre-construction conferences, periodic (generally weekly) on-site construction meetings, change order review meetings and appropriate conflict resolution meetings.
- Providing daily inspection reports (except during less frequent part time inspections). The report will include:

date and time of observed construction; weather conditions; staff present; comments describing the work for the day, issues encountered, items meeting approval as complete or not meeting approval. The daily inspection report should be accompanied by construction photos to help document the inspectors notes and should be provided to the construction manager at the end of each working day.

D&A will also provide specialty inspection conducted by our engineering team (for structural and electrical) or by a specific sub-consultant for items such as painting or welding inspections.

Our inspectors clearly know when it is appropriate to stop work due to safety concerns and when not to interfere with work by directing the contractor's "means and methods" towards completing the work. In any case, if the inspector stops the work or is not comfortable in how the contractor is proceeding, our inspecting staff know to contact the District representative (CM) and the design engineer right away.

In cases where stopping work is necessary or conflicts arise between the inspector and contractor, D&A engineering staff will be available to assist immediately by phone or in person in approximately 30 minutes from our local office in El Dorado Hills.



RANCHO MURIETA COMMUNITY SERVICES DISTRICT

Proposal for On-Call Professional Services for District Engineer and Construction Inspection Services

SECTION 2: RELEVANT EXPERIENCE AND EXPERTISE

D&A has been a leader in the area of on-call engineering services throughout the region for several years. The following is a list of clients where D&A provides services similar to those required by the District.

Client	Services Provided	Project Examples
EL Dorado Irrigation District Serving the west slope of El Dorado County for water and wastewater	Water/Wastewater treatment and conveyance designs, Structural designs, water system modeling and construction inspection.	Main Ditch 42-inch, 12,000LF Pipeline, 4 water booster stations and rehabilitation of 5 sewage lift stations, tank repair designs, treatment plant structures and building improvements, Inspection services for several pipeline projects and a hydroelectric plant upgrade.
Sacramento Suburban Water District Serving a large portion of Sacramento County with water supply and distribution	Pipeline replacement and Pump Station designs and Construction Management.	Over 200,000lf of pipe replacement, including construction management and inspection services.
San Juan Water District Providing treated water to multiple local water purveyors	Pipelines, pump stations, WTP structural and mechanical improvement.	Barton Rd Intertie and pump-back station with PCWA. Hinkle WTP washdown station and backwash disposal channel improvements.
City of Folsom Providing water and sewer services for the City	Water storage tanks and pipe improvements, and drainage designs.	Water treatment plant pipe and metering installations, rehabilitation designs for two tanks in Empire Ranch, Bidwell St. Drainage Outfall.
Placer County Water Agency Providing treated water to customers within the County	Pipeline designs, treatment plant building upgrades structural designs.	Banvard 20-inch pipeline including I-80 crossing, Foothill WTP building structural modifications.
City of Roseville Providing water and wastewater services for the City	Pipeline designs.	Hillcrest Neighborhood pipeline replacement, I-80 pipeline crossing.
City of Roseville Providing water and sewer services for the City	Engineering and Drafting support.	On-going well pump to waste systems for many of the City's existing wells.
County of Sacramento Providing water and sewer services for the County	Pipeline designs and Construction Management.	5-year program for County pipeline replacement project including CM and inspection services
RD 1000 Providing Drainage and Flood Control services for Natomas and North Sacramento area.	Capital Improvement Program and Rate/ Fee Study. Levee encroachment inventory.	Cost estimates for upgrades to all ditches and outfall pump stations for prioritization of improvements. Included assessment of future O&M costs and other annual expenses to help formulate new development fees and rates for existing users.
County of Sacramento DWR Providing Drainage and Flood Control services for Sacramento County	Third Party Review	Provided specialty third party review for scour analysis for culvert crossing in Sacramento County.
Various Land Developers Large scale home development construction from master plan to turn-key homes	Review of Master Plans, Tentative Maps, and Improvement Plans for Drainage Design	Provided full drainage analysis (including LID, Storm Water Quality, Hydromodification, and Flood Control for various developments in the region. Gives D&A first-hand knowledge of what is required during the development process to meet all state regulations.



RANCHO MURIETA COMMUNITY SERVICES DISTRICT

Proposal for On-Call Professional Services for District Engineer and Construction Inspection Services

Many of the above clients and projects are quite large compared to RMCS D, however nearly all of the clients utilize D&A for fast turnaround smaller assignments, such as emergency repair design of a highway crossing (PCWA Banvard crossing), or structural modifications at water treatment plants or abandonment of sewage lift stations for EID.

We also utilize several contract inspectors for small and large projects, often as part of on-call agreements, where agencies cannot keep these inspectors as year-round employees. Our staff structural design engineer Daryl Heigher is frequently called upon to provide specialty structural inspections, most recently at several

deterioration storage tanks for EID. His inspections and recommended for rehabilitation have led to design and construction on multiple tanks. A majority of our work at D&A originates from repeat assignments from existing clients, often under our on-call contracts.

In addition to these reference projects, over the years D&A has provided engineering support and design services for several projects within the Rancho Murieta community for the District. Listed below are descriptions of some those efforts.

Project	Description of Work	Year Services Provided
WWTP Facilities Painting, Pole Barn Construction, Warehouse Expansion	Provide design plans and specifications for the treatment plan re-painting of all above ground piping and structures, design for a new pole barn for equipment storage and the expansion the warehouse and shop.	2003
Rio Oso Tank & Booster Sta	Provided design and support during construction for piping improvements, pump modifications and installation of VFDs at the Rio Oso Tank and Booster Station	2004
Water Treatment Plant Expansion Design Review	Provided detailed review of design plans and specifications and hydraulic calculations (by another firm) for upgrades to the RMCS D water treatment plant on behalf of the District.	2003
Stormwater Quality Improvement Plan	Created stormwater quality guidelines and standards for the District in accordance with the current State regulations and stormwater discharge permit.	2003
Water Storage Expansion Study	Provided a feasibility report for expanding water storage for drought mitigation. Alternatives included purchase and expansion of the private reservoir at the NW corner of Highway 16 and Stonehouse Rd	2012
Calero Reservoir Expansion Study	Provided preliminary design and costs for expanding Calero Reservoir to the south and east to gain significant storage capacity.	2016
Yellow Bridge Re-Painting	Provided specifications for the re-painting of the Yellow Bridge over the Cosumnes River including lead paint removal and containment requirements.	2009
Water Well Design	As a subconsultant to NV5, D&A provided design for two well sites including package treatment facilities and pipeline tie-in to the existing District system. On well facility was raised several feet onto a steel platform designed by D&A to keep the facility above the 100-yr flood level.	2014



RANCHO MURIETA COMMUNITY SERVICES DISTRICT

Proposal for On-Call Professional Services for District Engineer and Construction Inspection Services

RELEVANT EXPERIENCE

The following section highlights some of the **D&A's recent experience that is relevant to the type of services that may be provided under the on-call services contract.** The projects were selected to provide the District with a representation of the variety of services D&A can provide and the depth of our team's knowledge base. The projects include the following:

Lower Banvard Canal Pipeline Replacement Project – Placer County Water Agency (PCWA) – D&A recently completed the design and permitting to replace an existing 200-ft section of 20-inch steel pipeline within a 30-inch concrete casing located under Highway 80. The pipeline has experienced multiple failures. D&A is working extensively with the Agency and Caltrans on permitting for the project which requires an exception to Caltrans standards.

Whitney Boulevard Main Replacement Project – Placer County Water Agency (PCWA) – D&A completed design for an 18-inch ductile iron pipeline along Whitney Boulevard in Rocklin, CA. The project includes relocating the existing main from the landscaped median to the paved right-of-way. The existing pipeline was failing due to corrosion. The project included coordination with the City of Rocklin to obtain an encroachment permit. This included negotiations regarding pavement restoration requirements. The project also included corrosion protection design. D&A provided engineering services during construction with construction completed in 2017.

Pardi Way/Big Cut Road/Sacramento Street Waterline Replacement Project – City of Placerville – Provided design and engineering services during construction on the Pardi Way/Big Cut Road/Sacramento Street Waterline Replacement Project. The project was constructed within City and Caltrans right-of-way and consisted of installing approximately 4,500 feet of 6- to 12-inch diameter PVC water mains with 16 connections to the existing system. The main replacement required re-establishing connections to 31 metered services and the relocation of 15

metered services and new in-tract piping. The project included installing 5 new water quality sampling stations, 5 air release valves, and 9 fire hydrants.

On-call Pipeline Replacement Projects – Sacramento Suburban Water District (SSWD) – Provided design services for over 200,000 feet of 8-inch, 12-inch and 16-inch ductile iron mainline replacement as part of the District's long-term distribution main relocation program. The District is relocating mainlines from the backyards into streets in an effort to make access easier as well as replace aging and leaking systems. In addition to mainline replacements, water meters are being added to each service as part of the District's ongoing meter retrofit project. D&A also provided construction management services including full time inspection services. *D&A was recently selected for SSWD's current on-call services contract with the District to provide design of main replacement projects.*

Arden Service Area Pipeline Replacement Project – Sacramento County Water Agency (SCWA) – D&A has been contracted with Sacramento County Water Agency (SCWA) since 2016 for a multi-year, multi-phased water main and meter installation project that will bring the Agency into compliance with SB 2572 and to ensure the system is adequately sized to meet fire flow demands. The entire Project will install over 38 miles of 6- to 16-inch ductile iron and C900 PVC pipe within residential and major arterial roads (Watt Ave., Fair Oaks Blvd, and Howe Ave.) and over 3,000 residential and commercial water meters. This project will abandon existing water mains located in backyard easements and install new water mains within the road right-of-way to allow better access.

Diamond Valley Ranch Irrigation Improvements Project – South Tahoe Public Utility District (STPUD) – D&A has worked with STPUD since 2010 to design, permit, and construct the Diamond Valley Irrigation Improvements Project. The project included 20,000 feet of 18-inch recycled water pipeline, a hydroelectric plant,



RANCHO MURIETA COMMUNITY SERVICES DISTRICT

Proposal for On-Call Professional Services for District Engineer and Construction Inspection Services

freshwater pump station and center pivot recycled water irrigation system. In addition, D&A designed approximately 2,000 feet of 48-inch diameter pipeline to replace a portion of an irrigation supply canal that was experiencing significant seepage losses in this stretch of ditch. D&A is providing on-going support over the next three years for irrigation scheduling and annual discharge permitting reporting.

Barton Road Intertie Project – San Juan Water District/Placer County Water Agency (PCWA) –

Provided design and engineering services during construction for San Juan Water District’s Barton Road Intertie Project. The project includes approximately 2,500 feet on new 12-inch pipeline along Barton Road to intertie with PCWA’s water system. The project provides SJWC and PCWA the flexibility to convey water between the two water providers during drought times. At the intertie between PCWA and SJWD, a pressure reducing/flow control station was designed and constructed. The station includes a pump-back feature which will allow water to be pumped from SJWD’s system back into PCWA’s system. A propeller meter was also provided to allow meter readings with flow in either direction.

Schnell School and Cedar Ravine PRV Station Improvements – City of Placerville –

As part of the City’s Measure H funded projects, two existing below ground PRV stations are being relocated above ground. The stations have on-going maintenance issues and are located in busy street right-of-way. The project will relocate them to a safer area and bring the stations up to current standards.

Tanner WTP Hydroelectric – Amador County Water Agency –

D&A provided design for two hydroelectric projects for Amador County Water Agency. The Tanner Water Treatment Plant project includes design for inflow pipeline modifications and an in-line



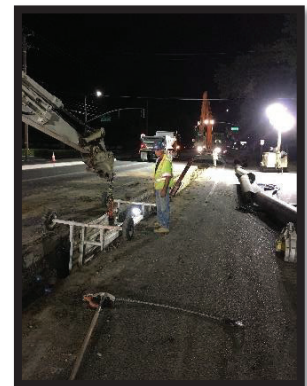
hydroelectric plant. The Ione Project includes design of high pressure waterline into the station and new Pelton Wheel hydroelectric station and new outflow pipelines to an existing reservoir. Construction and commissioning of the Tanner project was completed is 2016. The Ione project is currently under design.

Fair Oaks 40 and Canyon Fall Flow Control Stations– San Juan Water District (SJWD) –

Design two separate pressure reducing and flow control stations: Canyon Falls 16-inch pressure reducing and 8-inch flow control station, and Fair Oaks 40 14-inch pressure reducing and 8-inch flow control station. Each station allowed SJWD the ability to regulate and control water conveyance under low and high conditions to their retail water users.

East Ridge Water Tank & Pump Stations –

The East Ridge development is a new 750 home community planned for construction in the El Dorado Hills area. In order to serve these homes, EID required the design and construction of a water tank, a transfer pump station and a booster station. The transfer pump station moves water from an existing EID storage tank to the new tank designed under this project. The booster pump station raises the pressure in a portion of the development that cannot be adequately served by the tank alone. Design tasks involved in this project were tank and pump station facility siting, site grading and drainage facilities, equipment selection, surge analysis, surge mitigation, retaining walls, and hydraulic analysis.



Granite Bay Pump Station – San Juan Water District (SJWD) –

Upgrades to the Upper Granite Bay Pump Station were required due to increases in water demands and for reliability. The existing pump station was built within the confines of a concrete block fence, which the new pump station was required to fit inside of as well. The new facility



RANCHO MURIETA COMMUNITY SERVICES DISTRICT

Proposal for On-Call Professional Services for District Engineer and Construction Inspection Services

had to be designed and built around the existing pump system as it had to keep running during construction and final testing. D&A provided hydraulic system analysis, piping design, structure design, construction observation, and shop drawing review.

Tank Improvements Project – City of Folsom – D&A provided plans and specifications for renovations to the City’s East Reservoir 1 potable water tank which was constructed in the mid-1980’s and were in need of upgrading.

State Street Water Capacity and Sewer Rehabilitation Project – City of West Sacramento (CoWS) – The project is currently under design and includes preparing plans, specifications and cost estimates for the replacement of approximately 10,000-feet of water mains and reconnection to existing water meters and rehabilitation of approximately 38,000-feet of 12-inch and 8-inch gravity sewer main. D&A conducting a condition assessment on approximately 38,000-feet of gravity sewer main

and provided rehabilitation recommendation using cured-in-place pipe (CIPP) and full remove and replacement of sewer main segments.

Corporation Yard Safety Improvement Project – Citrus Heights Water District (CHWD) –

D&A provided design and construction management services for improvements to



the District’s Corporation Yard which include the following: covered vehicular wash station, two (2) open vacuum excavation dump pits, covered material storage areas (storage of AB, sand, concrete and asphalt), expanded parking, paving and security improvements, drainage improvements, water pipeline improvements including the addition of fire hydrants, replacement of existing sewer pipeline. Services include obtaining all environmental and building permits required for the project.



RANCHO MURIETA COMMUNITY SERVICES DISTRICT

Proposal for On-Call Professional Services for District Engineer and Construction Inspection Services

SECTION 3: PROJECT TEAM

Project Managers & Senior Staff

Domenichelli & Associates (D&A) is comprised of six (6) registered engineers, two (2) engineers-in-training, one (1) staff engineer, a full-time drafter, and part time office staff all of whom may have involvement in RMCS D's projects. Our project Principals are **Joe Domenichelli** who brings 40-years of experience and **Sara Rogers** with 20-years of experience in water resources planning and design. They will provide QA/QC for all projects as well as project management services, with Mr. Domenichelli providing district engineering services. They both have experience working with RMCS D and have an understanding of the District's standards and preferences. **Tom Dugan** with over 20-years of experience, **Daryl Heigher** with 25-years of experience, **Brian Hammer** with 14-years of experience, and **Adam Motiejunas** with 12-years of experience are all registered engineers with D&A who have the capability to manage and provide project design engineering for the on-call services contract. The following section provides a brief statement of qualification for each of our principal and senior staff members relative to the on-call services requested. The following information highlights worked performed by our team members.

Other D&A Engineering Staff

All of our D&A engineers-in-training and staff engineers, Juana Tellez, Bryon Deubel, and Matthew Domenichelli will work with our senior level staff on the District's projects. Our drafter, Jim Cade, has over 25-years of experience providing drafting services on projects similar to the District's projects.

The D&A team members are all proficient in the use of the latest design software, including

AutoCAD Civil 3D and water system modeling software, including H2ONet. All of our engineers have experience preparing plans and specifications, providing cost estimates, bidding support (including addendum preparation) and construction support (including plan revisions).

Construction Inspectors

Richard Ingraham is a construction manager and inspector with vast experience in pipeline projects. A former contractor, Mr. Ingraham has worked providing inspection and constructability reviews for the past 8-years and has worked with D&A on several projects during this time period. A former contractor, **Scott Ahlstrom** has provided inspection services for over 200,000 feet of pipeline installation within Sacramento County. Similar to Mr. Ingram, Scott has worked with D&A on multiple pipeline projects. **Jeremy Rogers** has been providing inspection services throughout the Sacramento Region for more than 20 years, including several assignments for D&A. He has provided inspection on a variety of projects from structural building improvements, pump stations, pipelines and treatment plant facilities. **Pete Reagan** has worked in the construction industry for nearly 40 years and has been providing inspection services on D&A projects for the past 15 years, including well projects, pump stations and many miles of pipelines. **Joe Saylor** has over 30 years of experience in the construction industry with over 15 years providing inspection for water, wastewater and recycled water distribution projects, and collection and storage and treatment facilities. Mr. Saylor has provided inspections for D&A projects for the past 5 years on several projects for El Dorado Irrigation District.



RANCHO MURIETA COMMUNITY SERVICES DISTRICT

Proposal for On-Call Professional Services for District Engineer and Construction Inspection Services

Domenichelli & Associates Key Team Profiles



Joe Domenichelli, PE

Area of Expertise

District Engineer

Years of Experience

40 Total

Registration

Professional Engineer, CA

Education

B.S. Civil Engineering, CSU Chico

Bio

As District Engineer and the main point of contact for RMCS D’s On-call services, Mr. Domenichelli’s responsibilities will include overall QA/QC, District Engineer duties as well as design assistance and review. Mr. Domenichelli has 40 years of engineering experience primarily in the area of water resources engineering. He has provided a variety of services from master planning of water systems for entire communities to the design and construction management of municipal improvements such as water pipelines, pump stations and storage tanks. His understanding of the District’s needs through similar work will allow him to provide quality assurance review and management necessary to complete design and construction management services on time and on budget.

Project Experience

- On Call District Engineer, RD1000
- Antelope Pump Station Project, Sacramento Suburban Water District (SSWD)
- City of Folsom PR Stations
- El Dorado Irrigation District Stream Gage Installations
- Main Ditch Pipeline Design
- Wholesale Water Transmission System Metering Improvements Project (SJWD)



Sara Rogers, PE, QSD

Area of Expertise

Regulatory Compliance

Years of Experience

20 Total

Registration

Professional Engineer, CA
Qualified SWPPP Developer/Practitioner, CA

Education

M.S. Civil Engineering, California Polytechnic State University, San Luis Obispo
B.S. BioResource and Agricultural Engineering, California Polytechnic State University, SLO

Bio

Sara Rogers has 20 years of experience, eighteen of which are with D&A where she serves as Vice President. She is a registered engineer with a Master of Science degree with an emphasis on water resources design. Ms. Rogers’ has extensive experience in pipeline design, hydrologic and hydraulic studies, pump station design, and hydraulic structure design (including pressure reducing stations). Her background also includes grant/loan writing, administration and reporting along with regulatory support such as discharge permitting and reporting. Ms. Rogers also has construction management experience that has resulted in low change orders on competitively bid projects. She understands the necessary components in plan and specification development to minimize change orders.

Project Experience

- QSD/QSP Services
- Sacramento Suburban Water District – On-going Main Replacement Projects
- Sacramento County Water Agency (SCWA) Arden Service Area Pipeline and Meter Installation Project Design
- State Streets Water Capacity and Sewer Rehabilitation Project, City of West Sacramento (CoWS)
- Rio Linda/Elverta Community District (RLECWD) – Well 16 Pump Station and Pipeline Project
- Water System Hydraulic Modeling



RANCHO MURIETA COMMUNITY SERVICES DISTRICT

Proposal for On-Call Professional Services for District Engineer and Construction Inspection Services

Domenichelli & Associates Key Team Profiles



Tom Dugan, PE, QSD, D1

Area of Expertise:

Construction Management

Years of Experience

20 Total

Registration:

Professional Engineer, CA
 Qualified SWPPP
 Developer/Practitioner, CA
 NASSCO CIPP Certified
 D1 Water Distribution Operator

Education

B.S. BioResource and Agricultural Engineering, California Polytechnic State University, San Luis Obispo

Bio

Tom Dugan is a California Registered Engineer with over 20 years of experience on water infrastructure design and construction management projects. Mr. Dugan has been involved with several large and small diameter water pipeline designs and has had the opportunity to serve as the construction manager on several of these projects. He holds certifications as a State certified SWPPP developer, State certified D1 Drinking Water Operator, and a certified cured-in-place pipe inspector through National Association of Sewer Service Companies (NASSCO). He is experienced in bid document and cost estimate development, value engineering, bid services, and engineering services during construction.

Project Experience

- City of West Sacramento – construction management
- Antelope Pump Station – CM services
- Pipeline Relocation Project – Carmichael Water District – construction management
- Arden Oaks, North Country Club Estates and North Highlands Phase 3 Main Replacement Project – SSWD – Construction Management
- Water Mainline and Meter Retrofit Project– City of Lodi – construction management



Daryl Heigher, PE

Area of Expertise

Structural Engineering

Years of Experience

25 Total

Registration

Professional Engineer, CA

Education

B.S. Civil Engineering, CSU Sacramento

Bio

Daryl Heigher is a California registered engineer with 25 years of experience. Mr. Heigher has been with Domenichelli and Associates since 2012. Mr. Heigher has extensive experience in gravity and pressure pipeline design, pump station design, hydraulic structure design, structural design, cost estimating, construction inspection, and shop drawing review. He has served as project engineer for the design of water and wastewater treatment plants, pipelines pump stations, and storage tanks.

Project Experience

- Foothill Water Treatment Plant Antelope Canal Improvements – PCWA
- Antelope Pump Station
- EID On-Call Projects
- Auburn WTP – PCWA
- EID Sewer Lift Station Design
- EID Tank Inspections and Renovations
- Redwood Tank Replacement – Calaveras County Water District (CCWD)



Brian Hammer, PE

Area of Expertise

Hydrology and Hydraulics

Years of Experience

14 Total

Bio

Mr. Hammer has worked with Domenichelli & Associates for 14 years gaining experience in water systems design, hydraulics and hydrology, and water resources engineering. He has experience with Land Development, Agency Review, and hydrology and hydraulic analysis.

Project Experience

- Folsom Plan Area Drainage Study
- Folsom EID Intertie Project
- Small Hydro Development and Design – El Dorado Irrigation District
- Madeira East Water Model
- Third Party Review for Sac. County DWR



RANCHO MURIETA COMMUNITY SERVICES DISTRICT

Proposal for On-Call Professional Services for District Engineer and Construction Inspection Services

Domenichelli & Associates Key Team Profiles



Adam Motiejunas, PE

Area of Expertise

Engineering Design

Years of Experience

12 Total

Registration

Professional Engineer, CA

Education

B.S. Civil Engineering, California State University, Sacramento

Bio

Adam Motiejunas is a Registered Engineer who has been with D&A since 2013, serving D&A’s clients on a multitude of water and wastewater infrastructure projects. Mr. Motiejunas’ experience includes multiple water system designs and modeling projects with thousands of feet of pipe length ranging in diameter from 4 to 18 inches

Project Experience

- Alta Loop Pipeline
- 20-inch Banvard Pipeline
- Design Engineer for the Downtown Water Mains Replacement Project Hillcrest Neighborhood
- State Streets Water Capacity and Sewer Rehabilitation Project, City of West Sacramento
- Pardi Way Water Main Replacement Project



Richard Ingraham

Area of Expertise

Construction Inspector

Years of Experience

21 Total

Registration

Class A Contractors License

Registered QSP

D1 Water Distribution Operator

Bacteria Testing Certification

Bio

Richard Ingraham is a construction manager and inspector with vast experience in main line replacement projects. A former contractor, Mr. Ingraham has worked providing inspection and constructability reviews for the past 8-years. Mr. Ingraham also provides testing services for flushing and disinfection to ensure the contractor is in compliance.

Project Experience

- On-call Construction Management and Inspection for SSWD
- City of Roseville – Third Party Plan Review
- City of West Sacramento –Third Party Constructability Review.
- EID Powerhouse Roof Repair Project
- Arden Service Area Main Replacement and Meter Retrofit Design



Scott Ahlstrom

Area of Expertise

Construction Inspector

Years of Experience

40 Total

Registration

Class A Contractors License

D1 Water Distribution Operator

Bacteria Testing Certification

Bio

A former contractor, Mr. Ahlstrom has provided inspection services for over 200,000 feet of pipeline installation within Sacramento County. Through this work Mr. Ahlstrom understands the potential issues that are unique to construction projects. He also understands the importance of public relations and working with property owners. Mr. Ahlstrom is familiar with a design-assist arrangement through his work with Sacramento Suburban Water District and their use of Master Service contractors.

Project Experience

- On-call Construction Management and Inspection for SSWD



RANCHO MURIETA COMMUNITY SERVICES DISTRICT

Proposal for On-Call Professional Services for District Engineer and Construction Inspection Services

Domenichelli & Associates Key Team Profiles



Jeremy Rogers

Area of Expertise

Construction Inspector

Years of Experience

25 Total

Education

B.S. Mechanical Engineering, California State University, Sacramento

Bio

Jeremy Rogers has over 25 years of experience in construction and inspection. He has worked for multiple large contractors (Kiewit Pacific and Shimmick Construction) on both large and small projects. He understands the potential issues that may come up and how to quickly resolve them. He also understands where contractors are most likely to attempt to cut corners on construction projects. He will quickly bring issues to the Project Manager’s attention.

Project Experience

- Arden Service Area Main Replacement and Meter Retrofit Design Construction Inspection Services
- EID Powerhouse Roof Repair Project Inspection Services.
- City of Vacaville On-call Inspection Services
- Santa Anita Dam Spillway Improvements
- Antelope Pumpback Pump Station Inspection Services

Project Team Differentiators

There are multiple factors that differentiate the Domenichelli and Associates (D&A) team from others including:

- 1 Response and timeliness** – Due to D&A’s proximity to RMCS D’s service area, our staff has the ability to respond to the District’s requests and needs promptly, keeping projects on-time and within budget.
- 2 Similar Project Experience** – As discussed in the experience section of this Statement of Qualifications, D&A team members have extensive experience

working on projects similar in nature to those proposed by RMCS D. We have also provided similar “on-call” services with multiple agencies.

- 3 Principal Involvement** – Our philosophy is to have significant principal involvement on every project. No deliverable leaves the office without an extensive review by a principal member of our staff.
- 4 Competitive Rates** – As you will see in our included rate sheet, by remaining a smaller firm, D&A has been able to keep our rates extremely competitive.

Sub-Consultant Project Team

D&A and our preferred sub-consulting firms are relatively small, specialized firms, that will provide **principal involvement** on every District project. Our project teams are comprised of highly qualified and committed people who are enthusiastic about making each project a success. Our use of sub-consultants will depend on the project scope and needs of the District and will be approved by the District prior to finalizing our team on all projects.

The following provides a list of our preferred sub-consultant and the types of services they provide. This is followed by brief SOQ

information provided by each firm. We have created a network of sub-consultants to allow use of another qualified firm if one is busy at the time of a request. Additional information on our sub-consultants (including key personnel resumes) can be provided upon request.



RANCHO MURIETA COMMUNITY SERVICES DISTRICT

Proposal for On-Call Professional Services for District Engineer and Construction Inspection Services

Sub-consultant	Services Provided	Example Projects that D&A has teamed on
Frisch Engineering Inc.	Electrical Controls SCADA Arc Flash	Foothill WTP ArcFlash, Antelope Canal Improvements, Well 16 Pump Station, Reservoir 7 Hydro-electric Station, Three Valleys Hydro-electric Station, STPUD Diamond Valley Ranch Raw Water Pump Station and SCADA,
A.T.E.E.M.	Electrical Controls SCADA	SSWD Antelope Pump Station, Various On-call assignments for EID
Youngdahl Consulting	Geotechnical Investigations Specialty Testing during construction	Ranch Del Oro Lift Station, Tanner Hydro-electric Station
Blackburn Consulting	Geotechnical Investigations Specialty Testing during construction	Construction services for the Rocklin Front Yard Main Relocation Project
A.R.Divers Surveying	Surveying Easement Documentation	Multiple SSWD Pipeline Projects, PCWA projects for Whitney Blvd Main Replacement and Rocklin FYM
Area West	Surveying Easement Documentation	Multiple SSWD Pipeline Projects, Multiple Pipeline Project for Carmichael Water District
JDH Corrosion Consultants, Inc.	Corrosion investigations Corrosion protection design	Whitney Blvd Main Replacement Project, EID Main Ditch Pipeline
EN2 Resources	Environmental Compliance CEQA/NEPA Environmental Surveys	CCWD Big Trees Tank, RLECWD Well 15 and Transmission Main Project, CHWD Corporation Yard Improvements, City of Placerville Pardi Pipeline Project



RANCHO MURIETA COMMUNITY SERVICES DISTRICT

Proposal for On-Call Professional Services for District Engineer
and Construction Inspection Services

SECTION 4: QUALITY ASSURANCE/ CONTROL; CONFLICTS

Project Management and Quality Control/ Assurance

Our project management approach involves strong leadership and communication. Our management team members are principal and senior level staff. This level of commitment and expertise has made D&A's project teams highly successful with continued solicitation for services from our current clients. We provide concise and complete meeting minutes and progress reports along with monthly billing reports describing work performed, percent complete, and remaining budget. We are committed to communication often and early between design team members, client staff, regulatory staff, and public and private interests to assure quick and efficient response to District needs.

Our QA/QC plan and process begins and ends with the Project Manager. Our project manager is always a senior level firm principal that has personal responsibility for the final product. As a smaller firm, we have the flexibility to manage our workload in order to ensure that each project receives commitment from our principals who

have a vested interest in the success of each project and, therefore, in the quality of each work product. Relative to design and technical services deliverables QA/QC, it is company policy that all design and technical documents be reviewed by a principal member of our staff before submittal. We have not wavered from this policy since the company was formed in 2002.

Potential Conflicts

Relative to potential conflicts that may hinder D&A from carrying out the services as described in our Statement of Work, we have no such conflicts, nor do we anticipate any future conflicts that could hinder our ability to perform these services. However, we feel it is important to note that we are currently providing drainage and flood control analyses support for a development project within the community of Rancho Murieta (Riverview). If D&A is selected for the on-call contract and the drainage study is not complete before executing this contract, D&A can end our current agreement on the Riverview project and at most, be available to the developer's engineer in a non-paying advisory role.

SECTION 5: ON-CALL EXPERIENCE REFERENCES

D&A currently provides similar on-call services for multiple public agency clients. The following references are provided for four of our current on-call contracts.

El Dorado Irrigation District – D&A has worked on EID's on-call services contract since the on-call list was started in 2004. Our team has been consistently selected every 3-5 years to continue providing on-call services. We have most recently been selected to be on their on-call services list for the following categories:

- General Engineering
- Drafting
- Construction Management and Inspection

Reference: Brian Mueller, Director of Engineering, (530) 642-4329,
BMueller@eid.org



RANCHO MURIETA COMMUNITY SERVICES DISTRICT
 Proposal for On-Call Professional Services for District Engineer
 and Construction Inspection Services

San Juan Water District (SJWD) – D&A is currently on the District on-call engineering services list. Typical contracts with the District have included providing water pollution control plans, pipeline replacement design, and structural support.

Reference: Tony Barela, Operations Manager (916) 791-6939, tbarela@sjwd.org

City of West Sacramento – D&A was selected for the City of West Sacramento’s On-call Engineering Services in 2018. D&A has worked on multiple pipeline replacement and sewer lining projects with the City.

Reference: Amber Wallace, Associate Civil Engineer (916) 617-5327, amberwa@cityofwestsacramento.org

SECTION 6: CONTRACT REQUIREMENTS

D&A acknowledges acceptance of the terms and conditions in the District’s standard agreement for professional services, “Rancho Murieta Community Services District Services Agreement”, provided as Attachment C in the RFP.

SECTION 7: INSURANCE REQUIREMENTS

A. Insurance Coverage – D&A’s insurance is provided by the following providers:

General Liability:

ISU Insurance Service – BC Env. Brokerage
 Policy #FEI-ECC-12948-07
 1037 Suncastr Lane, Suite 103
 El Dorado Hills, CA 95762
 Coverage expires on February 12, 2022

Workers’ Compensation Insurance:

State Fund Compensation Insurance
 Policy #1727130-2021
 P.O. Box 8192
 Pleasanton, CA 94588
 Policy expires on January 1, 2022

minimum coverages throughout the duration of the contract and will submit proof of insurance in compliance with Attachment C of the RFP. D&A will verify all subconsultants maintain the same indemnity and insurance requirements as stated in Attachment C of the RFP.

As shown in the below table, D&A meets all RMCS D minimum insurance requirements. Additionally, D&A will maintain the RMCS D

Producer	Type of Insurance/Endorsement	RMCS D Minimum Requirement	D&A Coverage
ISU Insurance Services	Com'l GL - Bodily Injury and Personal Injury	\$2,000,000 occ	\$5,000,000 occ
	Property Damage	\$2,000,000 occ	\$5,000,000 occ
	Automobile Liability	\$1,000,000 occ	\$1,000,000 occ
	Additional insured Endorsement	Required	Provided
	Automobile Liability Endorsement	Required	Provided
	Waiver of Subrogation Endorsement	Required	Provided
	Errors & Omissions	\$2,000,000 claim \$4,000,000 agg	\$5,000,000 claim \$5,000,000 agg
State Compensation Insurance Fund	Workers Compensation	\$1,000,000 occ	\$1,000,000 occ
	Additional insured Endorsement	-	Provided
	Waiver of Subrogation	Required	Provided



RANCHO MURIETA COMMUNITY SERVICES DISTRICT

Proposal for On-Call Professional Services for District Engineer and Construction Inspection Services

RESUMES

Resumes are provided for the following Key D&A Staff Members:

Joe Domenichelli – President

Sara Rogers – Vice President

Tom Dugan – Project Manager 2

Daryl Heigher – Project Manager 2

Brian Hammer – Senior Engineer 1

Adam Motiejunas – Project Engineer 1

Richard Ingraham – Construction Inspector

Scott Ahlstrom – Construction Inspector

Jeremy Rogers – Construction Inspector

Joseph Saylor – Construction Inspector

Pete Reagan – Construction Inspector

JOE DOMENICHELLI – PRESIDENT

Current Job Title	Project Principal 1/ QA/QC
Years of Experience	40 total
Registration	Professional Engineer CA and NV
Education	B.S. Civil Engineering, CSU Chico



As project principal for RMCS D’s On-call services, Mr. Domenicelli’s responsibilities will include overall QA/QC, District Engineer duties as well as design assistance and review. Mr. Domenicelli has 40 years of engineering experience primarily in the area of water resources engineering. He has provided a variety of services from master planning of water systems for entire communities to the design and construction management of municipal improvements such as water pipelines, pump stations and storage tanks. His understanding of the District’s needs through similar work will allow him to provide quality assurance review and management necessary to complete design and construction management services on time and on budget.

Applicable experience has included – Designs of water pipelines up to 48-inch diameter, WTP upgrades, water booster stations, PR stations, storage tanks, reclaimed water pipeline, reclaimed and raw water booster stations. Also, provided water and wastewater masterplans, assisted in capital improvement plans and developed fee and rate studies.

Summary of Relevant Experience

Antelope Pump Station Project, Sacramento Suburban Water District (SSWD) – Project Management and Construction services for SSWD’s Antelope Pump back project. The project will allow groundwater to be pumped from SSWD’s system to San Juan Water District (SJWD)’s system through the Cooperative Transmission Pipeline. The ultimate capacity of the station is 15,000gpm with three 5,000gpm pumps. A fourth 3,000gpm pump would provide water to a separate low-pressure zone in the SSWD system. The pump station was constructed with two of the pumps (10,000gpm capacity).

City Creek Water Transmission Line – Design and construction support services for San Bernardino County Water District’s 18-inch and 30-inch, 2,400-foot pipeline, PR station from the 60-inch Foothill Pipeline and intake piping to the East Valley WTP.

Pleasant Oak Main Project – EID – Provided independent QA/QC, pipe material selection and pipeline alignment design for 5 miles of new 36-

inch treated water pipeline for El Dorado Irrigation District. The pipeline replaced an existing aging techite pipe that was experiencing failure causing significant damage to properties and local drainage channels. The pipeline traversed difficult terrain with pressures up to 300psi where crossing low elevation ravines.

Wholesale Water Transmission System Metering Improvements Project – SJWD – Project management, QA/QC for the project which, in total, replaced 33 meters and added approximately 1,000-feet of pipelines ranging in size from 8-inch to 72-inch.

Main Ditch Pipeline Design – Provided design for 3 miles of 42-inch water transmission pipeline to replace the existing Main Ditch for El Dorado Irrigation District. This raw water pipeline is being constructed across widely varied terrain including steep hillsides in densely wooded areas, within section of an existing ditch and within nearly 2 miles of a winding mountain road. The design services have included extensive public coordination, environmental

Technical Specialties

- ✓ Infrastructure design
- ✓ Master Planning
- ✓ Hydro-electric Design
- ✓ Project Management
- ✓ QA/QC
- ✓ Construction Management

mitigation and permit negotiations.

PCWA, Bowman and Foothill WTP Improvements – Provided design for pipe, building enclosure, bridge crane system, pipe coating and catwalk improvements at the Bowman Treatment Plant. While with another firm, provided intake design for the Foothill Treatment Plant.

Calaveras County Water District Storage Tanks – Provided project management and QA/QC for the design and project management for two glass lined steel tanks (80K and 150K gallons) and one 200,000-gallon elevated storage tank. The two steel tanks are located in the Big Trees State Park requiring special permitting and environmental studies with the associated State agencies.

City of Folsom PR Stations – Provided design for two pressure reducing stations for the City of Folsom. These stations established major connections to adjacent systems. One is for an intertie with San Juan Water District and the second serves new development South of Highway 50.

PCWA – Lower Banvard Canal Pipeline Replacement Project – Provided QA/QC reviews for design plans, specifications, and cost estimating to replace 240 feet of 20-inch steel pipe traversing Interstate 80 within a 30-inch concrete pipe.

El Dorado Irrigation District Stream Gage Installations – Provided stream flow measurements and created rating curves for Deer Creek and Carson Creek. After calibrating the flow data, installed staff gages at each location that correlated with the elevation-flow curves. The flow monitoring allowed for accurate reporting of treatment plant discharge as a percentage of stream flow to meet permitted limits.

Sacramento Suburban Water District – Ongoing Main Replacement Projects – Provided QA/QC and Project Management services for over 300,000 feet of 8-inch, 12-inch and 16-inch

ductile iron mainline replacement as part of the District's long-term distribution main relocation program.

Long Barn Oddfellows Community capital Improvement Plan and Rate Study- Provided preliminary designs, construction cost estimates, along with annual operating and maintenance for an entire upgrade to an existing water system to provide adequate water supply and distribution to approximately 500 services. After completing costs, developed a rate study to pay for these improvements.

Reclamation District 1000- Capital Improvement Plan and Development Fee Study- Provided preliminary designs and cost estimates for upgrade to existing facilities along with new improvements to serve a large area in northern Sacramento County. From these construction estimate along with estimate of annual operating and maintenance costs, assisted with fee assessment rate program for new development in the area.

Rancho Murieta Community Services District - Miscellaneous Projects - Provided project management and engineering services for District projects performed by D&A. These projects included:

- WWTP upgrade designs for re-paving all above ground pipe, a new pole barn and addition to the existing shop and warehouse.
- Rio Oso Booster Pump Station Upgrades
- Well A1 and Well B designs including water treatment and pipeline intertie to existing system.
- Calero Reservoir Storage Expansion feasibility study.
- Water Treatment Plant Design Review.
- Yellow Bridge Re-Painting project.
- District Drought Mitigation water storage alternatives analysis.
- Inundation mapping and Emergency Action Planning for District reservoirs.

SARA ROGERS – VICE PRESIDENT

Current Job Title	Project Principal 2
Years of Experience	20 total
Registration	Professional Engineer CA, Qualified SWPPP Developer/Practitioner, CA
Education	M.S. Civil Engineering, California Polytechnic State University, San Luis Obispo B.S. BioResource and Agricultural Engineering, California Polytechnic State University, SLO



Sara Rogers has 20 years of experience, eighteen of which are with D&A where she serves as Vice President. She is a registered engineer with a Master of Science degree with an emphasis on water resources design. Ms. Rogers’ has extensive experience in pipeline design, hydrologic and hydraulic studies, pump station design, and hydraulic structure design (including pressure reducing stations). Her background also includes grant/loan writing, administration and reporting along with regulatory support such as discharge permitting and reporting. Ms. Rogers also has construction management experience that has resulted in low change orders on competitively bid projects. She understands the necessary components in plan and specification development to minimize change orders.

Applicable experience has included – Regulatory compliance for water recourses projects (potable water supply, storm drain design, well site construction, Caltrans ROW, Etc). Designs of water pipelines and meter retrofit projects, pressure reducing stations, storage tanks, hydroelectric stations, recycled water facility design, diversion structure and canal hydraulic analysis and design and water system masterplans and modeling.

Summary of Relevant Experience

Sacramento Suburban Water District – Ongoing Main Replacement Projects – Provided design services for over 300,000 feet of 8-inch, 12-inch and 16-inch ductile iron mainline replacement as part of the District’s long-term distribution main relocation program. In addition to mainline replacements, water meters are being added to each service as part of the District’s ongoing meter retrofit project. D&A also provided construction management including full time inspection services. D&A was selected for SSWD’s current on-call services contract with the District to provide design of main replacement projects.

Sacramento County Water Agency (SCWA) Arden Service Area Pipeline and Meter Installation Project Design – Currently providing design and construction services for SCWA’s Arden Service Area which includes

over 38 miles of pipelines and 3,000-meter installations. The first two phases of the project have been constructed. The third phase of the project bid in late 2020 with construction planned for 2021. Project has included a transmission main (16-inch DIP) along Fair Oaks Boulevard and Watt Avenue. Project also included crossing the intersection of Watt and Fair Oaks with a 12-inch pipeline. D&A was selected to provide construction management and inspection services for the second and third phases of the project.

State Streets Water Capacity and Sewer Rehabilitation Project, City of West Sacramento (CoWS) – The design included preparing plans, specifications, and cost estimate for approximately 10,000 feet of new water main and rehabilitating approximately 36,000 feet of gravity sewer main within the CoWS State Street area. The project includes reconnecting 213

Technical Specialties

- ✓ Regulatory Compliance
- ✓ Project Management
- ✓ QSD/QSP Services
- ✓ Infrastructure design

metered water service and approximately 500 sewer lateral reconnections. The sewer and water portions of the project were prepared with separate bid documents.

Rio Linda/Elverta Community District (RLECWD) – Well 16 Pump Station and Pipeline Project – Coordination with RLECWD and various permitting agencies and overall management in the preparation of the plans and specifications for 1,500-gpm pump station project. Project consists of new pump pedestal and discharge piping, control building, hypochlorite disinfection, treatment drainage basin, emergency generator, sound wall, security iron fencing, automatic sliding gate, drought-tolerant landscaping, and approximately 2,000 feet of 8- and 12-inch ductile iron pipe to tie into existing system and loop two dead-end water mains.

PCWA – Lower Banvard Canal Pipeline Replacement Project – Provided project management for preparation of design plans, specifications, and cost estimating to replace 240 feet of 20-inch steel pipe traversing Interstate 80 within a 30-inch concrete pipe and replacing 20-inch steel pipe within the Interstate's road embankment. The replacement pipe will be 20-inch fused PVC pipe installed within the existing 30-inch casing and new 20-inch steel pipe installed within the Interstate road embankment. The design included preparing documentation for Caltrans coordination. The project will include providing bid support and engineering services during construction.

Rocklin Front Yard Main Relocation Project – PCWA – Project Manager for design which includes approximately 10,000 feet of 4-inch, 6-inch, 8-inch and 12-inch ductile iron pipeline. The pipeline is being relocated from an existing easement in the front yards of a residential neighborhood in the City of Rocklin due to corrosion issues on the service saddles that have been breaking and causing property damage.

Tahoe Park Water Main Replacement Project – City of Sacramento – Project

Manager for design of approximately 14,000 feet of 8-inch and 12-inch pipe replacement and over 400 meter retrofits.

South Tahoe Public Utility District (STPUD) – Project Engineer for over 2 miles of 18-inch reclaimed water pipeline through cross country terrain, nearly 5,000 feet of up to 48-inch PVC raw water pipelines, several screened inlet (diversion) structures, a raw water pump station, several thousand feet of irrigation pipelines and two large center pivot irrigation systems. Incorporated into the design is a new hydroelectric plant off of the high pressure 18-inch line. The plant utilizes a pump-as-turbine supplied by reclaimed water sent from the Tahoe Basin to irrigation disposal in Alpine County. D&A also assisted in preparing applications for grant funding to complete the construction. Engineering services also include pipeline design, permitting assistance, SWPPP preparation, bidding assistance, utility coordination and engineering services during construction. Ms. Rogers continues to provide on-going irrigation scheduling and annual discharge reporting. The project was recently awarded the ASCE's Sustainable Project of the Year for 2019.

QSD/QSP Services – Developed over 50 Storm Water Pollution Prevention Plans (SWPPPs) under the new Construction General Permit. Projects have included Risk Level 1 and 2 for both traditional and LUP. Services have included storm water sampling and reporting using the State's SMARTS system. Experience includes development of Water Pollution Control Plans for the Ralston Powerhouse and Hell Hole Dam Rockfall Barrier Protection project.

Water System Hydraulic Modeling – Modeling experience includes multiple hydraulic system models for master planning of new communities as well as modeling existing water systems to determine improvements necessary to meet minimum fire flow requirements and possible system reoperation.

TOM DUGAN

Current Job Title	Project Manager 2
Years of Experience	20 total
Registration	Professional Engineer, CA Qualified SWPPP Developer/Practitioner, CA NASSCO CIPP Certified Drinking Water Operator D1
Education	B.S. BioResource and Agricultural Engineering, California Polytechnic State University, San Luis Obispo



Tom Dugan is a California registered engineer with over 20-years of experience on water and non-potable infrastructure design and construction management projects. Mr. Dugan has been involved with several large and small diameter water and non-potable water pipeline designs and has had the opportunity to serve as the construction manager on several of these projects. He holds certifications as a State certified SWPPP developer, D1 State certified D1 Drinking Water Operator, and a certified cured-in-place pipe inspector through National Association of Sewer Service Companies (NASSCO). He is experienced in bid document and cost estimate development, value engineering and bid services, and engineering services during construction.

Applicable experience has included – Multiple water pipeline designs ranging from 4-inches to 20-inches in diameter of varying material types; design assistance of hydroelectric facilities, design of pressure reducing stations; and one sewer rehabilitation project using cured-in-place pipe. Construction management experience includes a 15,000-gpm pump station; 8 miles of 84-inch and 72-inch welded steel pipe; eight water main and meter replacement projects.

Summary of Relevant Experience

Lower Banvard Canal Pipeline Replacement Project – PCWA – Developed biddable plans to replace approximately 430-feet of 20-inch pipe (240-feet within the existing 30-inch casing under Interstate 80 (Newcastle, CA)) using fusible PVC and CMLC welded steel pipe, blowoff and combination air valve, renew driveway entrance, coordination assistance between PCWA and Caltrans, bid assist, and engineering services during construction. The project recently bid and construction to begin the first quarter of 2021.

Alta Loop Pipeline – Cable Road Water Main Replacement Project – PCWA – Project Manager and Sr. Engineer on the project that included 4,660 linear-feet of 8-inch ductile iron pipeline within residential streets. The design included mainline replacement of old undersized main, replacing fire hydrants, reconnecting 42 residential metered services and design of a 6-

inch pressure reducing station. The project required establishing a water system model from the source to analyze the distribution system and confirm fire flows.

City of Roseville – Downtown Water Mains Replacement Project Hillcrest Neighborhood – City of Roseville – Sr. Design Engineer on the project that included 20,300 linear-feet of 8-inch PVC and ductile iron pipeline within residential streets south of Douglas Boulevard and west of Interstate 80. The design included mainline replacement of old undersized main, replacing fire hydrants and reconnecting 343 residential metered services.

State Street Water Main Replacement Project – City of West Sacramento – Provided design and currently providing construction management services for 9,700 feet of 8-inch and 12-inch PVC water main within residential streets and 210 new meter services, new fire

Technical Specialties

- ✓ Infrastructure design
- ✓ Project Management
- ✓ Cost Estimating
- ✓ Construction Management

hydrants, and blowoffs.

State Street Sewer Rehabilitation Project – City of West Sacramento – Provided design and currently providing construction management services over 36,000 feet of 8-inch and 12-inch sewer main rehabilitation using Cured-in-Place Pipe (CIPP). Design included performing a condition assessment and prioritization of the sewer mains and identifying locations that sewer mains would need to be removed and replaced. Construction Management service involve closed coordination with the City staff and contractor, responding to RFI, reviewing progress schedules, developing field orders, and project closeout documentation.

Grant Avenue Mainline Replacement Project – Carmichael Water District – Provided design and engineering service during construction of 6,430 feet of 8-inch and 6-inch ductile iron pipe within minor and major Sacramento County roads, fire hydrant relocation and replacements, 76 new water service connections, and a 50-foot horizontal directional drill installation.

Stanley Avenue Water Main Replacement Project – Carmichael Water District – Preparing design and contract documentation for approximately 1,900 feet of 16-inch ductile iron pipe and 1,100 feet of 8-inch ductile iron pipe, 59 new metered service connection, fire hydrant replacement, two new 4-inch meters with backflow devices, a water sampling station, and a combination air valve. All work will occur within residential streets under Sacramento County jurisdiction.

Whitney Blvd Water Main Replacement Project – PCWA – Provided design and engineering service during construction for 4,100-feet of 18-inch ductile iron pipe, new fire hydrants, and 79 metered services. The project included a cathodic protection system due to corrosive soils. Service included assistance in obtaining permits from the City of Rocklin and South Placer MUD.

Barton Road Intertie PR Station and

Pumpback project – Provided design engineering services for 2,500 feet of 12-inch pipeline connecting SJWD's and PCWA's system. Project included a combined pressure reducing station and pumpback facility to allow flow in each direction between the two systems.

Hydroelectric Designs – San Bernardino Valley Municipal Water District – Provided design assistance for two 400Kw hydroelectric facilities. Both projects included pipeline and turnout structure design, permit assistance, and engineering service during construction.

Arden Oaks and North Country Club Estates Main Replacement Projects – SSWD – Provided construction management services for the installation of over 60,000 feet of 8-inch and 12-inch ductile iron pipeline along major roadways and multiple residential streets.

Tahoe Park Main Replacement Project – City of Sacramento – Design of approximately 14,000 feet of Mainline Replacement and Meter Retrofit

Pardi Way Water Main Replacement Project – City of Placerville – Project Engineer on the design of over 4,000 feet 6-, 8-, 12-inch PVC mainline replacement, 46-meter service reconnections, and system appurtenances. Work included public outreach and development of meter service location sheets.

Gilmore Road, Polaris Street, and Ridgeway Drive Waterline Replacement Project – El Dorado Irrigation District (EID) – Project Engineer on the design of over 10,000-feet of 4-, 6-, 8-, and 12-inch ductile iron pipe, new fire hydrants, air/vacuum release valves, and reconnect 158 metered services.

Fair Oaks 40 and Canyon Fall Pressure Reducing Stations – San Juan Water District – Design engineer on two 16-inch and 8-inch pressure reducing stations each with the ability to handle low and high flow conditions.

DARYL HEIGHER

Current Job Title	Project Manager 2
Years of Experience	25 total
Registration	Professional Engineer CA
Education	B.S. Civil Engineering, CSU Sacramento



Daryl Heigher is a California registered engineer with 25 years of experience. Mr. Heigher has been with Domenichelli and Associates since 2012. Mr. Heigher has extensive experience in gravity and pressure pipeline design, pump station design, hydraulic structure design, structural design, cost estimating, construction inspection, and shop drawing review. He has served as project engineer for the design of water and wastewater treatment plants, pipelines pump stations, and storage tanks.

Applicable project experience has included – designs of water pipelines up to 18-inch diameter, Water Treatment Plant upgrades, water booster stations, pressure reducing stations, storage tanks, hydroelectric stations and trash screening systems. Structural designs for numerous hydraulic structures at Water Treatment Plants, pump stations and hydroelectric stations, Water Treatment Plant intakes, filter structures, solids drying pond design and other miscellaneous water system component structural and hydraulic designs.

Summary of Relevant Experience

Foothill Water Treatment Plant – Three projects were designed for the PCWA at the Foothill WTP.

1. A previous design by another firm included decorative trusses on the exterior of many of the buildings at the plant. A design was provided which replaces the trusses with a new aluminum rafter which will not rot or deteriorate.
2. One of the trusses supports a plant communications antenna. As a separate task, but in conjunction with the above, a design was produced for an antenna support that takes the place of the truss as a support and raises the antenna to a greater elevation to improve line of site communications.
3. The southwest wall of the Actiflo structure pipe gallery had two locations where the concrete around the cast-in-place rafter anchor bolts was failing. The cause was determined, and a repair designed to permanently fix the issue.

Antelope Canal Improvements – PCWA – A study was performed to determine an

Technical Specialties

- ✓ Structural Design
- ✓ Pump Station Design
- ✓ Piping System Design
- ✓ WTP Improvement Design
- ✓ Storage Tank Design
- ✓ Hydro-electric Design

appropriate method to better control water levels in the canal and prevent spilling from the Antelope Canal and its offshoots. From this study, two of the offshoot canals were chosen to implement the recommended control methods. Plans and specifications were produced for contractor bidding.

Antelope Pump Station- The Antelope Pump Station is a cooperative project between SJWD and SSWD. It takes well water from the SSWD system, which is supplied by wells, and can transfer it during times of drought at a rate of 10,000 gpm to the SJWD system, which is supplied by surface water. Currently it has two duty pumps and is designed to have a third installed in the future for a total of 15,000 gpm.

EID On Call Projects – Provided civil and mechanical design of a multitude of small projects within an On-Call Services contract. Projects such as prioritizing existing tank renovations due to interior and exterior corrosion, design of pipe bracing, evaluation of multiple District facilities for structural weakness, evaluation of existing facilities for service access, evaluation of existing pumping

systems to identify possible efficiency improvements.

EID Sewer Lift Station Design – Design of multiple sewer lift station reconstruction projects for EID including the St. Andrews lift station and Highland Hills lift station.

Also designed operator safety measures at nine lift stations.

Provided designs to remove four existing lift stations and convert the systems to gravity flow to other newer nearby lift stations.

EID Tank Inspections and Renovations – EIDs water system contains many storage tanks. A number of them which were constructed approximately 20 years ago were experiencing severe coating failures. Nine of these were chosen to be inspected and evaluated for repair. A report was written evaluating each one and prioritizing them for renovation. Four of the tanks have been repaired thus far. One of the tanks was used as a test bed for a conversion to an aluminum dome roof structure.

Auburn WTP – PCWA – While at another firm, provided structural design of the plant upgrades which included raw water screens, a raw water pump station, modular factory-built treatment units, a 600,000-gallon filtered water clearwell, backwash pumps, high service pumps, solids thickener and centrifuge dewatering system.

Sunset WTP – PCWA – While at another firm, provided structural design for the project that involved expansion of the 6 mgd plant to 8 mgd through modifications to existing sedimentation basins and the filters and a new chemical feed building designed by Mr. Heigher.

Reservoir A WTP – EID – Provided structural designs for a new chemical feed and storage building, filter complex, sedimentation basins, and raw water pump stations at various stages of improvements to the treatment plant.

Reservoir 1 WTP – EID – Provided structural designs for a new chemical feed and storage building, and raw water intake at the headworks during various stages of

improvements to the treatment plant. Also performed a study to determine appropriate modifications to the filter backwash system to prevent potential overflows.

Bridlewood Water Storage Tank – EID – Provided foundation and mechanical design for a new 4-million-gallon steel storage tank in the El Dorado Hills area to replace an existing concrete tank. Also, provided design improvements at the existing booster pump station.

Serrano Village C Recycled Water Storage Tank – EID – Provided design services and site layout for a new 2-million-gallon steel storage tank to serve recycled water for irrigation to new developments in the Serrano area of El Dorado Hills.

Serrano Village C Recycled Water Pump Station – EID – Provided structural and mechanical design services and site layout for a new booster pump station to provide recycled water for irrigation to the higher elevation lots in the Serrano area of El Dorado Hills.

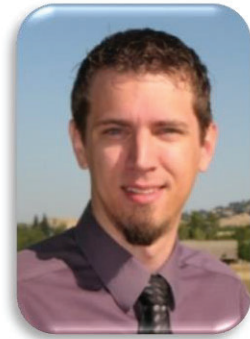
Redwood Tank Replacement – Calaveras County Water District (CCWD) – Design for replacement of two existing redwood storage tanks in Calaveras County. The tanks were replaced with new glass-lined bolted steel tanks to help mitigate against fire damage potential.

Granite Bay Booster Pump Stations – SJWD – Provided civil, mechanical, hydraulic and structural design for the Upper Granite Bay pump station. Also, provided structural design for the Lower Granite Bay pump station.

Moose Hall Pump Station – EID – Providing design and construction support services for the replacement of the existing Moose Hall Pump Station. The original station was constructed as a temporary solution to supply water to one water treatment plant from another during the annual winter maintenance of the raw water supply. At the time of construction, the temporary station was more than 20 years old.

BRIAN HAMMER

Current Job Title	Senior Engineer 1
Years of Experience	14 total
Registration	Professional Engineer CA
Education	B.S. Civil Engineering, California Polytechnic State University, San Luis Obispo



Brian Hammer is a registered engineer with 14 years of experience. Mr. Hammer has worked with Domenichelli & Associates for 13 years gaining experience in water systems design, hydraulics and hydrology, and water resources engineering. He has experience with land development, providing hydrology and hydraulic analysis for master plans, tentative maps, and improvement plans. In addition to the preparation of the above documents, Mr. Hammer provides review of previously prepared documents for land development clients during the due-diligence phase of development. Mr. Hammer has provided hydrologic and hydraulic analysis for bridges, streams, and rivers, and communities throughout Sacramento County, El Dorado County, San Joaquin County, Placer County, Stanislaus County, Yolo County, and Guam. Mr. Hammer's experience in hydrologic analysis, hydraulic analysis, and hydraulic design has enabled him to provide analysis that is both technically sound and realistic to real-world conditions. In addition to Mr. Hammer's experience in hydrology and hydraulics he has experience providing pipeline analysis and design in Sacramento County and Santa Clara County.

Technical Specialties

- ✓ Water System Modeling
- ✓ Hydrologic/Hydraulic Modeling
- ✓ Surge Modeling
- ✓ Infrastructure Design

Applicable project experience has included – 25 miles of water pipeline design (more than 30 projects) up to 18-inch diameter, hydroelectric project, booster stations, and multiple site civil designs. Water modeling and masterplans, drainage modeling and design, and bank stabilization designs.

Summary of Relevant Experience

North Highlands Phase 1 Main Replacement Project – SSWD – 18,000 feet of backyard main replacement – This project included installation down Watt Ave which involved significant utility coordination. Developed plans, specifications and cost estimating for the project. D&A provided construction management services for this project as well.

Bohemian Village Main Replacement Project – SSWD – 27,000 feet of main replacement. This project included significant utility coordination along Marconi Ave.

San Jose Water Company Main Replacement Project – 50,000 feet of main replacement for a design-build project

Folsom EID Intertie Project, City of Folsom – Provided design for a pressure reduction, pressure control, flow control station connecting

the City of Folsom water system to the El Dorado Irrigation District water system.

Aerojet Booster Pump Stations and 2MG Water Storage Tank – Provided design for three booster stations and 2MG welded steel storage tank for Aerojet's industrial water supply system.

Plan Area Drainage Study – Owners Group – Performed detailed hydrologic and hydraulic analyses using HEC-HMS, HEC-RAS and SWMM for a 20 square mile planning area south of Highway 50 in Sacramento County. Sizing of detention facilities included latest water quality and Hydro-modification principles and modeling as well as credits for low impact development (LID) measures. Established 100-yr floodplain limits for two main streams and several small tributaries.

Small Hydro Development and Design – El Dorado Irrigation District – Assisted in design services for two small hydro projects located within EID’s existing drinking water system. Services included generation analysis, cost analysis, project feasibility, and station design.

Madeira East Water Model – Provided water modeling for a new development in southern Elk Grove. Modeling included peak hour and maximum day with fire flow in Zone 40.

Willow Island Phase I Design – Yuba City – Provided preliminary mapping for the overall plan, rock slope protection design, parking lot layout and assisted in bike trail design criteria. Reviewed hydraulic analysis by others for the COE and provided recommendation for hydraulic parameters.

Colfax Distribution Box and Header Pipe Project – Placer County Water Agency – Provided design plans for a raw water distribution box, bypass, and header pipe for Placer county Water Agency. Project includes development of an emergency bypass capable of operating if the distribution box requires maintenance. Feasibility of a hydroelectric station on the header pipe was analyzed. Construction services include RFI site visits during construction, submittal review, and change order review.

Water System Modeling and Replacement Analysis – Odd Fellows – Provided water system modeling for an aging private water system in the Sierra Mountains. Analysis included sizing for fire protection, replacement phasing, and fee estimates for the project.

Rosemont System Water Model – CAW – Provided water system analysis for a

Sacramento community showing the effects of proposed system changes. Modeling included extended duration simulations of multiple well sites and system calibration.

Westpark Hydraulic Model – Westpark Owners Group – Provided hydraulic analysis of the proposed Westpark subdivision in Sacramento County. Analysis included Max day, Peak hour, and Fire Flow for a proposed subdivision.

Bowman Dam Surge Analysis – NID – Provided a surge analysis for a 66-inch valve replacement at Bowman Dam.

Pleasant Oak Main Surge Analysis – EID – Provided surge analysis for over 2-miles of 18-inch to 30-inch pipeline connected to a proposed hydro-electric station.

Willow Hill Reservoir Rating Curve – City of Folsom – Provided an elevation storage rating curve for the Willow Hill Reservoir in the City of Folsom. Determine the required upgrades to the Willow Hill Reservoir to meet Division of Safety of Dams requirements.

Sanitary Sewer Force Main Design – Olivehurst PUD – Provided design for an 8-inch sanitary sewer force main in Olivehurst, Ca. Project included multiple connections to sewer lift stations and project phasing incorporating the phasing of the new factory discharge requirements.

OPUD Water System Design – Olivehurst PUD – Provided master plan design of a future backbone potable water system. Design included sizing of water mains, well sites, and tanks. Determined anticipated future system demands and locations of supply for maximum day, peak hour, and fire suppression scenarios.

ADAM MOTIEJUNAS – PROJECT ENGINEER 1

Current Job Title	Project Engineer 1
Years of Experience	12 total
Registration	Professional Engineer CA
Education	B.S. Civil Engineering, California State University, Sacramento



Adam Motiejunas is a Registered Engineer who has been with D&A since 2013, serving D&A’s clients on a multitude of water and wastewater infrastructure projects. Mr. Motiejunas’ experience includes multiple water system designs and modeling projects with thousands of feet of pipe length ranging in diameter from 4 to 18 inches. Mr. Motiejunas’ work on past pipeline projects (including main replacements for SSWD, West Valley Construction, CWD, EID, City of Placerville, Blue Lakes Springs WD, Placer County Water Agency, and City of West Sacramento) has given him an opportunity to become versed in pipeline design, bid document development, shop drawing review, and cost estimating.

Technical Specialties

- ✓ Water System Modeling
- ✓ Hydrologic/Hydraulic Modeling
- ✓ Surge Modeling
- ✓ Infrastructure Design

Applicable project experience has included – 25 miles of water pipeline design (more than 30 projects) up to 18-inch diameter, hydroelectric project, booster stations, and multiple site civil designs. Water modeling and masterplans.

Summary of Relevant Experience

Placer County Water Agency – Design Engineer for Whitney Blvd. Pipeline in Rocklin, CA. The project included 4,100 linear-feet of 18-inch ductile iron pipeline and associated appurtenances.

Alta Loop Pipeline – Cable Road Water Main Replacement Project – PCWA – Design Engineer for the Water Main Replacement Project in Alta CA. The project included 4,660 linear-feet of 8-inch ductile iron pipeline within residential streets. The design included mainline replacement of old undersized main, replacing fire hydrants, reconnecting 42 residential metered services and design of a 6-inch pressure reducing station. The project required establishing a water system model from the source to analyze the distribution system and confirm fire flows.

Placer County Water Agency – 20-inch Banvard Pipeline – Provided design for a pipeline crossing Interstate 80 near Newcastle, CA. The pipe will replace a failing pipeline beneath the freeway in an existing 30-inch concrete casing. After leaving the casing the pipe

traverses up a steep embankment in Caltrans right of way. Design efforts have included coordination with Caltrans, difficult slope shoring design and traffic control planning to close a freeway lane.

City of Roseville – Design Engineer for the Downtown Water Mains Replacement Project Hillcrest Neighborhood. The project included 20,300 linear-feet of 8-inch PVC and ductile iron pipeline within residential streets south of Douglas Boulevard and west of Interstate 80. The design included mainline replacement of old undersized main, replacing fire hydrants and reconnecting 343 residential metered services.

City of West Sacramento – State Streets Water Main Improvement Project. The project included 9,700 linear-feet of 8-inch PVC pipeline within residential streets. The design included mainline replacement of old undersized main, replacing fire hydrants and reconnecting 210 residential metered services.

Gilmore Road, Polaris Street, and Ridgeway Drive Waterline Replacement Project – El Dorado Irrigation District (EID) – Design



PLACER COUNTY WATER AGENCY

Proposal for On-Call Civil Engineering Design and Support Services

Engineer on the design of over 10,000-feet of 4-, 6-, 8-, and 12-inch ductile iron pipe, new fire hydrants, air/vacuum release valves, and reconnect 158 metered services.

City of San Jose Water Pipeline Replacement Projects – For over 10 years designing ductile iron water replacement projects within the City of San Jose from 8-inch to 12-inch diameter for an on-going replacement program. Designed more than 100,000 feet of pipelines for West Valley Construction who has contracted with the City over this time span. Much of the design has included trenchless construction through busy streets.

Blue Lake Springs Water District – Provided design for a 350gpm booster stations, several pressure reducing stations, assisted in the design for over 20,000 feet of distribution pipelines and prepared, ran and calibrated a system hydraulic model for the entire community distribution, storage and supply systems.

Pardi Way Water Main Replacement Project, City of Placerville – Provided plans and specifications for over 4,000 feet of 6-inch, 8-inch and 12-inch PVC mainline replacement. The project will abandon old backyard mains and fire hydrants and install new mains in Caltrans and City right-of-way along with new fire hydrants and reconnections to 46 metered services. Engineering services also included pipeline design, obtaining a Caltrans encroachment permit, bidding assistance and utility coordination and engineering services during construction.

Arden Oaks Water Main Replacement Project Phases 1&2 – SSWD – Provided design, plans and specifications for over 35,000 feet of 6-inch, 8-inch and 12-inch ductile iron mainline replacement. The project abandoned old backyard mains and fire hydrants and installed new mains in County right-of-way along with new fire hydrants and 403-meter retrofits. Engineering services also include pipeline design, public outreach, obtaining an encroachment permit, SWPPP preparation, meter location survey sheets preparation, bidding assistance, engineering services during

construction, utility coordination and full construction management.

North Country Club Estates Water Main Replacement Project Phases 1-4 – Provided design, plans and specifications for over 33,000 feet of 6-inch, 8-inch and 12-inch ductile iron mainline replacement. The project abandoned old backyard mains and fire hydrants and installed new mains in County right-of-way along with new fire hydrants and 600-meter retrofits. Engineering services also include pipeline design, public outreach, obtaining an encroachment permit, SWPPP preparation, bidding assistance, utility coordination and construction management.



Richard Ingraham



Mr. Ingraham has extensive experience in construction, inspection and construction management including wet and dry utilities, pavement and pump stations. Mr. Ingraham has been a resident of Roseville for the past 21 years residing in the Hillcrest neighborhood.

- Registrations**
 Class A Contractors License
 Registered QSP
 D1 Water Distribution Operator
 Bacteria Testing Certification

- PROFESSIONAL ENDEAVORS**
 Owner ERC Construction
 1995 to Present
 Burdick Excavating
 1987-2006

RELEVANT PROJECT EXPERIENCE

On-call Construction Management and Inspection Services, Sacramento Suburban Water District (SSWD), Sacramento, California. As part of an on-going contract with SSWD, provided construction management and inspection services for multiple pump stations and wells including the District’s Rutland Well, Walnut Well, Cottage Well, and Palm Well. Projects included updates to the pumps, facilities, tanks, and sand filtration.

Arden Service Area Main Replacement and Meter Retrofit Design – Sacramento County Water Agency (SCWA). Currently assisting with meter location surveys and inspection services for SCWA’s Arden Service Area which includes over 38 miles of pipelines and 3,000-meter installations. Project includes relocating pipelines from backyards into street ROW which involves reconnecting the existing service to the new meter. Includes large properties which involve compound bores. Provided inspection services for the installation of the service lines and reconnection to the existing service. Project involved extensive property owner coordination and communication.

Thor Main Replacement Project, SSWD, Sacramento, California. Provided inspection services for the installation of approximately 17,500 feet of water main and the reconnection of approximately 225 services including meter survey work. Major street installation on Fair Oaks Boulevard and Arden Way as night work.

Naomi Main Replacement Project, SSWD, Sacramento, California. Provided inspection services for the installation of approximately 3,000 feet of water main and the reconnection of approximately 25 services including meter survey work. Major street installation on Marconi Avenue and Auburn Boulevard as night work.

Jonas Water Main Replacement Project, SSWD, Sacramento, California. Provided inspection services for the installation of approximately 21,000 feet of water main and the reconnection of approximately 275 services including meter survey work. Major street installation on Hurley Way, Fulton Avenue and Arden Way as night work.

Albatross Main Replacement Project, SSWD, Sacramento California. Provided inspection services for the installation of approximately 4,000 feet of water main and the reconnection of approximately 60 services including meter survey work.



Arden Oaks Main Replacement Project, SSWD, Sacramento, California. Provided inspection services for the installation of approximately 35,000 feet of water main and reconnection to approximately 300 services.

North Highlands Phase II, SSWD, Sacramento, California. Provided inspection services for the installation of Approximately 25,000 feet of water main and reconnection to a major well-site.

Oak Plains Estates, SSWD, Sacramento, California. Provided construction services for the installation of Approximately 16,000 feet of water main including major street work, at night, on Watt and Marconi Avenues.

Tower-Tesla, SSWD, Sacramento, California. Provided construction services for the installation of Approximately 3,000 feet of water main installed at night to avoid major traffic around commercial business. Also major street work on Fulton Avenue at night.

Country Club Estates, SSWD, Sacramento, California. Provided construction services for the installation of Approximately 22,000 feet of water main including major street work on Watt and Whitney Avenues as night work. Also includes the inspection of an above-ground system installed to avoid major Oak tree root system

New Broadmoor, SSWD, Sacramento, California. Provided construction services for the installation of Approximately 23,000 feet of water main including major street installation on Watt, El Camino and Marconi Avenues as night work.

Terry Lynn Estates, SSWD, Sacramento, California. Provided construction services for the installation of Approximately 24,000 feet of water main including major street installation on Howe, Marconi, and El Camino Avenues as night work.

Drayton Heights Main Replacement Project, SSWD, Sacramento, California. Provided construction management and inspection services for the installation of approximately 35,000 feet of water main and reconnection to approximately 300 services. Services included night time inspection for main installation on Watt Avenue.



Parkland Estates Main Replacement Project Phase I and II, SSWD, Sacramento, California. Provided construction management and inspection services for the installation of approximately 48,000 feet of water main and reconnection to approximately 500 services. Services included night time inspection for main installation on Watt Avenue.

Edison Meadows Main Replacement Project, SSWD, Sacramento, California. Provided construction management and inspection services for the installation of approximately 30,000 feet of water main and reconnection to approximately 200 services. Services included night time inspection for main installation on Arden Way.

North Country Club Estates Water Main Replacement Project Phases 1-4, SSWD, Sacramento, California. Provided construction services of approximately 33,000 feet of 6-inch, 8-inch and 12-inch ductile iron mainline replacement. The project abandoned old backyard mains and fire hydrants and installed new mains in County right-of-way along with new fire hydrants and 600 meter retrofits.



Scott E. Ahlstrom



Mr. Ahlstrom's experience includes the construction of water, sewer and drainage pipeline systems for both commercial and residential use. Duty responsibilities covered acting as Foreman, Superintendent, and as an independent inspector.

REGISTRATIONS

Class A Contractors License

D1 Water Distribution
Operator Certificate

Bacteria Testing
Certification

PROFESSIONAL ENDEAVORS

S.E. Ahlstrom Inspection
2013-Present

Ahlstrom Construction, Inc.
1974-2013

RELEVANT PROJECT EXPERIENCE

Thor Main Replacement Project, Sacramento Suburban Water District (SSWD), Sacramento, California. Provided inspection services for the installation of approximately 17,500 feet of water main and the reconnection of approximately 225 services including meter survey work. Major street installation on Fair Oaks Boulevard and Arden Way as night work.

Naomi Main Replacement Project, SSWD, Sacramento, California. Provided inspection services for the installation of approximately 3,000 feet of water main and the reconnection of approximately 25 services including meter survey work. Major street installation on Marconi Avenue and Auburn Boulevard as night work.

Jonas Water Main Replacement Project, SSWD, Sacramento, California. Provided inspection services for the installation of approximately 21,000 feet of water main and the reconnection of approximately 275 services including meter survey work. Major street installation on Hurley Way, Fulton Avenue and Arden Way as night work.

Albatross Main Replacement Project, SSWD, Sacramento California. Provided inspection services for the installation of approximately 4,000 feet of water main and the reconnection of approximately 60 services including meter survey work.

North Country Club Estates Water Main Replacement Project Phases 1-4, SSWD, Sacramento, California. Provided construction services of approximately 33,000 feet of 6-inch, 8-inch and 12-inch ductile iron mainline replacement. The project abandoned old backyard mains and fire hydrants and installed new mains in County right-of-way along with new fire hydrants and 600 meter retrofits.

Arden Oaks Main Replacement Project, SSWD, Sacramento, California. Provided inspection services for the installation of approximately 35,000 feet of water main and reconnection to approximately 300 services.

North Highlands Phase II, (SSWD), Sacramento, California. Provided inspection services for the installation of Approximately 25,000 feet of water main and reconnection to a major well-site.



Scott E. Ahlstrom

Oak Plains Estates, SSWD, Sacramento, California. Provided construction services for the installation of Approximately 16,000 feet of water main including major street work, at night, on Watt and Marconi Avenues.

Tower-Tesla, SSWD, Sacramento, California. Provided construction services for the installation of Approximately 3,000 feet of water main installed at night to avoid major traffic around commercial business. Also major street work on Fulton Avenue at night.

Country Club Estates, SSWD, Sacramento, California. Provided construction services for the installation of Approximately 22,000 feet of water main including major street work on Watt and Whitney Avenues as night work. Also includes the inspection of an above-ground system installed to avoid major Oak tree root system

New Broadmoor, SSWD, Sacramento, California. Provided construction services for the installation of Approximately 23,000 feet of water main including major street installation on Watt, El Camino and Marconi Avenues as night work.

Terry Lynn Estates, SSWD, Sacramento, California. Provided construction services for the installation of Approximately 24,000 feet of water main including major street installation on Howe, Marconi, and El Camino Avenues as night work.

Drayton Heights Main Replacement Project, SSWD, Sacramento, California. Provided inspection services for the installation of approximately 26,000 feet of water main and reconnection of approximately 320 services including meter survey work. Included major street installation on Cottage Way and El Camino Avenue as night work.

Parkland Estates Main Replacement Project Phase I and II, SSWD, Sacramento, California. Provided inspection services for installation of approximately 30,000 feet of water main and the reconnection of approximately 550 services including meter survey work.

Edison Meadows Main Replacement Project, SSWD, Sacramento, California. Provided inspection services for the installation of approximately 23,00 feet of water main and the reconnection of approximately 300 services including meter survey work. Also, significant major street installation on Watt Avenue as night work.

Jeremy Rogers - Construction Inspector



Mr. Rogers has over 25 years of experience in the water and wastewater industries. His experience includes construction and start-up of multiple treatment plants and pump stations. His background includes project management and oversight including permitting, testing and reporting.

Education

B.S., Mechanical Engineering,
California State University,
Sacramento

PROFESSIONAL ENDEAVORS

JLR Environmental Solutions,
2014 to Present

JM Squared Associates, 2009-
2015

Shimmick Construction
Company, 2006-2009

Kiewit Construction Company,
2001-2006

RELEVANT EXPERIENCE

On-call Inspection Services for Mechanical Systems – City of Vacaville | Project Role: Construction Inspector

Providing on-going construction inspection services for the City of Vacaville related to mechanical systems at their treatment plants. Has included replacement of pumps, valves, and gates.

Powerhouse Roof Repair Project – El Dorado Irrigation District (EID) | Project Role: Construction Inspector

Currently providing inspection for the El Dorado Powerhouse and Switch Yard Deck Roof Drainage and Covering Renovation Project. Services include providing full time inspection with daily reports, coordination with EID's project manager, PG&E's project manager, and the contractor.

Arden Service Area Main Replacement and Meter Retrofit Design – Sacramento County Water Agency (SCWA) | Project Role: Meter Surveys / Inspection Services

Currently assisting with meter location surveys for SCWA's Arden Service Area which includes over 38 miles of pipelines and 3,000-meter installations. Project includes relocating pipelines from backyards into street ROW which involves reconnecting the existing service to the new meter. Includes large properties which involve compound bores. Provided inspection services for the installation of the service lines and reconnection to the existing service. Project involved extensive property owner coordination and communication.

Jonas Main Replacement Project – Sacramento Suburban Water District (SSWD) | Project Role: Meter Surveys

Assisted with completing meter location sheets for a portion of the Jonas Main Replacement project. Included determining the location of the meter and how to tie-into the existing service.

City of Wasco – Wasco Wastewater Treatment Plant, Wasco California. As Project Manager for JLR Environmental Consulting, provided oversight in the improvement of the performance of the facility through a series of evaluations and recommendations of the current staff and equipment. Trained staff in the proper operation and maintenance of current and replaced equipment, current Cal OSHA facility safety procedures and current report procedure for the State of California.

Crystal Springs Pump Station Project, San Francisco, California. As Project Manager for JM Squared Associates provided oversight of the installation and start-up of four 30MGD Pumps and associated equipment for the San Francisco Public Utility Commission - Crystal Springs Pump Station Project. Included Factory Testing services for four 2250HP Motors in Sao Paulo, Brazil, Two Vertical Frequency Drives in Pittsburg, Pennsylvania, and four

Jeremy Rogers - Construction Inspector

30MGD Horizontal Split Case Pumps in Fitsu, Japan. Coordinated all transportation to and from factories. Assisted crew in the installation of equipment. Performed Start-up and operation of pumping equipment until plant was turned over to client.

Soledad Wastewater Treatment Plant Expansion, Soledad, California. As Mechanical Superintendent for Shimmick Construction provided oversight of the installation of mechanical equipment including pumps, Piping filters, clarifiers, and UV system. Completed facility start-up, scheduling and permitting.

RD108 Pump Station Project, Grimes, California. As project manager for Shimmick Construction provided oversight of groundwater discharge including monitoring and testing of discharges to the Sacramento River. Also included installation and start-up of pumping equipment, piping and associated equipment.

Antelope Pump Station Inspection Services, Sacramento Suburban Water District, California. Provided construction inspection services for a 5,000gpm pump station. The project will groundwater to be pumped from SSWD's system to San Juan Water District and is funded through the State's drought relief program. Inspection services include pipeline inspection, water sampling and testing and NPDES related inspection.

Lower Northwest Interceptor Project – Bradshaw pipeline, Sacramento California. As Mechanical Superintendent for Shimmick construction provided oversight and project management for the installation of over 4 miles of 110-inch concrete pipeline. Included oversight of groundwater discharge including monitoring and testing of discharges to Ellis Creek.

Sacramento River Water Treatment Facility Expansion Project, Sacramento, California. As Mechanical Superintendent for Kiewit Construction Company provided oversight and project management for the installation and start-up of the Water Treatment Equipment including Pumping Equipment, Valves,& Piping.

Joseph Saylor

Mr. Saylor has over 30 years of experience in the construction industry. His experience includes planning and specification review of construction projects under local, state, and federal regulations.

Certification

AWWA Advanced Disinfection of Pipeline

Confined Space

Traffic Control

Industry Knowledge

Underground Utilities

Concrete (forms, rebar, placing, and curing)

Buildings (foundations, block and wood framing, roofing, door and window installation, flooring, painting and coatings, HVAC)

Electrical (conduits, wiring, equipment installation and mounting)

Grading, paving, fencing, and landscaping

El Dorado Irrigation District, Caltrans, San Jose Water district and other agency specifications

SKILLS

Facilitate cooperative and productive business relationships with developers, contractors, work crews and government agencies.

Reading, reviewing, and interpreting plans, specifications, maps, drawings, contracts, and work orders.

Recognizing confined space and hazardous material safety issues.

Ensuring compliance with safety rules, environmental requirements, and regulations.

Preparing basic surveying calculations to determine alignment and grades.

Performing calculations for volume, leakage, force, pressure, flow, and chemical saturation.

RELEVANT PROJECT EXPERIENCE

On-call construction inspection for EID | *Project Role: Construction Inspector* – Currently providing construction inspection for EID projects including water, wastewater and recycled water distribution projects, and collection and storage and treatment facilities. Work includes ensuring compliance with approved plans, specifications, and required regulations. Reports are provided directly to EID project managers.

Sanco Pipeline – Los Gatos, CA | *Project Role: Construction Supervisor* Supervised the installation of potable and recycled water mains and services. Installed over 200,000 feet of water main piping ranging in sizes from 6 inches to 24 inches in diameter. All pipe systems installed were successfully hydrostatically tested and disinfected. Also installed 2,000 feet of 8-inch sewer pipes 30 feet deep and 36-inch clay 40 feet deep both with zero leaks or sags.

Valley and Bay Area Experience | *Project Role: Construction Supervisor* Supervised the installation of potable and recycled water mains and services. Installed over 200,000 feet of water main piping ranging in sizes from 6 inches to 24 inches in diameter. All pipe systems installed were successfully hydrostatically tested and disinfected. Also installed 2,000 feet of 8-inch sewer pipes 30 feet deep and 36-inch clay 40 feet deep both with zero leaks or sags.

Peter W. Reagan

Mr. Reagan is a licensed general engineering contractor and certified preparer of SWPPPs.

In addition, he has extensive experience in pipeline inspection and construction of high pressure water lines, storm drains and sewers.

Education

A.A., History, American River College, Sacramento.

B.S., History, Stanford University, Palo Alto.

Registration

Grade D1 Water Distribution Operator
No. 44794

PROFESSIONAL ENDEAVORS

Sierra Valley Contractors
2009 to Present

Sierra National Construction, 1992 to 2009

Sierra Valley Construction, 1973 to 1992

RELEVANT PROJECT EXPERIENCE

Arden Oaks Main Replacement Project, Sacramento Suburban Water district (SSWD), Sacramento, California. Provided inspection services for the installation of approximately 35,000 feet of water main and reconnection to approximately 300 services. Services included night time inspection for main installation on Arden Way.

North Highlands Main Replacement Project, Sacramento Suburban Water district (SSWD), Sacramento, California. Provided inspection services for the installation of approximately 48,000 feet of water main and reconnection to approximately 500 services. Services included night time inspection for main installation on Watt Avenue.

North Highlands Main Replacement Project, Sacramento Suburban Water district (SSWD), Sacramento, California. Provided inspection services for the installation of approximately 48,000 feet of water main and reconnection to approximately 500 services. Services included night time inspection for main installation on Watt Avenue.

North Country Club Estates Main Replacement Project, Sacramento Suburban Water district (SSWD), Sacramento, California. Provided inspection services for the installation of approximately 33,000 feet of water main and reconnection to approximately 400 services.

Rustic Woods, Carmichael Water District, Carmichael, California. Provided inspection services for the installation of 4,000 feet of 6-inch pipeline in the Rustic Woods Condominiums.

Rio Linda Well Replacement Project, Rio Linda, California. Provided inspection services of a domestic water production well for Rio Linda/Elverta Community Water District. The new 2,800 gpm station is connected to the water system with approximately 5,000 linear feet of 16-inch pipeline. The new station includes a single vertical turbine pump, a variable speed drive, chlorine treatment, emergency backup generator, SCADA and provisions pumping to waste.

California American Water Company, Monterey, California. Provided full time inspection services for the installation of approximately 8,000 feet of 30-inch ductile iron transmission main and approximately 15,000 feet of 8-inch and 12-inch ductile iron water mains and approximately 500 services. Includes coordination for testing services.