



RANCHO MURIETA COMMUNITY SERVICES DISTRICT

15160 Jackson Road, Rancho Murieta, CA 95683
Office - 916-354-3700 * Fax - 916-354-2082

IMPROVEMENTS COMMITTEE

(Directors Les Clark and Randy Jenco)

Regular Meeting
January 7, 2020 at 8:00 a.m.

All persons present at District meetings will place their cellular devices in silent and/or vibrate mode (no ringing of any kind). During meetings, these devices will be used only for emergency purposes and, if used, the party called/calling will exit the meeting room for conversation. Other electronic and internet enabled devices are to be used in the "silent" mode. Under no circumstances will recording devices or problems associated with them be permitted to interrupt or delay District meetings.

AGENDA

1. **Call to Order**
2. **Comments from the Public**
3. **Review Monthly Updates**
 - ✚ Development
 - ✚ District Projects
 - ✚ Mr. Zieour Update
4. **RMA Pedestrian Bridge Parcel Conveyance Update**
5. **Requested Access to RMCS Drive from Adjacent Commercial Property**
6. **Ground Water Sustainability Plans SCGA/SRCD**
7. **Approve Bid For 3 Water Plant #1 Effluent Pump Replacements, CIP 20-5-1**
8. **Approve Chemical Feed Pump Skids, CIP 18-07-2**
9. **Approve Chemical Tank Purchase, CIP 18-07-2**
10. **Director and Staff Comments/Suggestions *[no action]***
11. **Adjournment**

In accordance with California Government Code Section 54957.5, any writing or document that is a public record, relates to an open session agenda item and is distributed less than 72 hours prior to a regular meeting will be made available for public inspection in the District offices during normal business hours. If,



however, the document is not distributed until the regular meeting to which it relates, then the document or writing will be made available to the public at the location of the meeting.

Note: This agenda is posted pursuant to the provisions of the Government Code commencing at Section 54950. The date of this posting is January 3, 2019. Posting locations are: 1) District Office; 2) Post Office; 3) Rancho Murieta Association; 4) Murieta Village Association.

MEMORANDUM

Date: January 3, 2020
To: Improvements Committee
From: Paul Siebensohn, Director of Field Operations
Subject: Monthly Project Updates

PROJECTS

Development

The Retreats East and North

No new update.

Rancho Murieta North – Development Project

Coastland submitted comments of their review of the drainage plan, ahead of Sacramento County's review as requested by the developer. The comments included mark-ups of the drainage plans (redlines); a request of spreadsheets and/or models used to obtain runoff volumes or sizing of drainage facilities; the Sacramento method not the Nolte method shall be used for piping and runoff calculations; documentation is needed to show that the SWRCB-DDW (Division of Drinking Water) has also provided review; study should show reference and consistency to District's 1988 Storm Drainage and Flood Control Master Plan and 2003 Master Plan which notes that the California Department of Health Services, Division of Drinking Water and Environmental Management prohibits runoff from urban development from entering any of the three reservoirs, and all urban runoff should be routed through water quality basins prior to discharging to the river; provide engineers estimates for continued operation and maintenance costs of proposed systems; LID (low impact development) review; provide summaries for each sub-shed for pre- and post-project runoff volumes; among many others.

The Murieta Gardens – Highway 16 Off-Site Improvements

No update.

MG - Murieta Marketplace

No updated related to District infrastructure. The project was paved.

MG - Lot 4&5

No update regarding inspection activities on this project. Coastland reviewed the landscape plans and provided back comments.

MG -Lot 10 (PDF Office)

Coastland has reviewed the plans submitted and provided comments back to the project engineer. Grading work has begun, but no preconstruction meeting or schedule for this project has been provided yet.

MG – Lot 11 (Gas Station/carwash)

An application packet and deposit have been received for the development of this lot. Coastland engineering has reviewed the civil plans and provided back comments.

The Murieta Gardens II – Infrastructure

No update. Project is possibly complete, but I am confirming this with Coastland engineering.

FAA Business Park

No update on this project.

District Projects

Water Plant #1 Effluent Pump replacements

I put together a bid packet and distributed it on December 12, 2019 with a hope to get several bids by January 2, 2020 in time for this committee meeting. Due to the holidays, vendors were having issues getting any quotes from distributors, therefore I issued an addendum to extend the bid date to January 6.

Water Rights Renewal

No update. The consultants from Wagner & Bosignore are still working on the Petition for Extension for our Master Water right renewal.

Dam Inundation Mapping and Emergency Action Plans

No update.

Recycled Water and Untreated Water Fee Study

We will be reviewing the preliminary study information from ClearSource Financial Consulting on January 22.

Chlorine Gas to Sodium Hypochlorite (bleach) conversion

Proceeding with this project, I have solicited costs for two 5,250 gallon insulated Sodium Hydroxide tanks to be installed at the bulk chemical storage site. I have also solicited costs for two Prominent brand chemical feed skids. Only one bidder has responded so far for each.

MEMORANDUM

Date: January 2, 2020
To: Board of Directors
From: Paul Siebensohn, Director of Field Operations
Subject: Consider Approval of: Three (3) Water Treatment Plant #1 – Effluent pump replacements, CIP 20-5-1

RECOMMENDED ACTION

Approve bid cost for three (3) Water Plant #1 effluent replacements to Kirby Pump and Mechanical in an amount of \$45,150 + a 15% contingency, for a total not to exceed of \$51,922.50. Funding to come from Water Capital Replacement Reserves.

BACKGROUND

With three of Water Plant #1's pumps in clear need of repair due to excessive corrosion, CIP 20-5-01 was approved in this past year's budget at an estimated amount of \$65,000. I put an RFB packet together and distributed it out on 12/10/2019 with a due date on 01/02/2020. Due to the holidays, I extended the bid date to January 6, 2020 via an addendum. Only two bids were received, the lowest coming from Kirby Pump & Mechanical Inc..

When putting the RFB together for the rehabilitation of the pumps, I considered the long lead time for pulling, inspecting, and work needed to blast and coat the pumps and columns, and repair the pumps, seals, bearings, etc., if there was any viable steel left, and asked staff for their input. They agreed that replacement would be better for long term viability and would eliminate the time lost from the pumps being out, and possibly be less expensive than the labor and materials needed for repairs. I also ran this by Mark Martin who agreed.

Due to costs exceeding the General Manager's authority, approval is needed from the Board. Water Capital reserves are currently at \$1,708,533.



Photo of one of the pumps taken 3 years ago showing advanced corrosion

1. BIDDING FORMS

BID

Proposal of Kirby's Pump and Mechanical, Inc
(hereinafter called Bidder), organized and existing under the laws of the State of _____,
_____, doing business as _____.*

Bidder agrees to perform all the work described for the following Lump Sum or unit prices:

(See Bid Schedule on the following pages.)

CONTRACT BID SCHEDULE

Water Plant #1 Effluent Replacements

The bidder shall submit a bid for all of the bid items. In case of an error in the extension of prices, the unit price shall govern. In case of an error in summation, the total of the corrected bid amounts shall govern.

The bid items as listed are meant to encompass all work items as called out in the contract specification. If an item is not specifically mentioned, it shall be assumed to be included in the most appropriate bid item. For definition of the bid items, see the Technical Specifications.

ITEM #	DESCRIPTION	Quantity	Unit	Unit Price	TOTAL PRICE
1	Labor to disconnect motors, pull pumps, install new pumps & motors, testing	3	EA	\$ 2500 -	\$ 7,500 -
2	New Pumps	3	EA	\$ 12,550 -	\$ 37,650 -

TOTAL (1&2)
\$ 45,150⁰⁰

[Signature] Bidder Signature
Engineer Title
Kirby's Pump and MECH., INC Company
3233 FITZGERALD RD Address
RANCHO CORDOVA CA City, State
01/06/2020 Date
538234 License Number

Attest _____

CONTRACT BID SCHEDULE

DESIGNATION OF SUBCONTRACTORS

The following is the name and location of the mill, shop or office of each subcontractor who will perform work or labor or render services to the above-signed bidder.

TYPE OF WORK	NAME	LICENSE NO.	BUSINESS ADDRESS
	<i>NONE</i>		

STATEMENT OF EXPERIENCE OF BIDDER

The Bidder shall state below what work of similar magnitude, character and comparable difficulty at similar rates of progress he has been done, give references that will enable the District to judge their experience, skill, and business standing and his ability to conduct the work as completely and as rapidly as required under the terms of the contract. The District will require that the Contractor have the necessary experience and ability to perform the work, and if, in the opinion of the District, any bidder does not have the requisite experience or ability, the bid of that bidder may be rejected as not responsive. The Contractor is also expected to utilize only personnel experienced with the equipment under the conditions described on this job. By signing below, the Contractor agrees to abide by this clause. Failure to comply shall be sufficient cause for termination of this contract by the District. Should this occur, the District shall withhold sufficient monies from the Contract to ensure completion of the job in a timely manner and to pay any liquidated damages due the District. By signing below, Contractor covenants, warrants and represents the following:

1. Contractor is knowledgeable and experienced in performing services comparable to the work required by District under the Contract.
2. The Work shall be performed in a manner consistent with the highest level of care and skill exercised by other contractors performing similar work.
3. Contractor is currently, and at all times during the performance of the Work will be, qualified to carry out and perform the Work by reason of the fact that Contractor and its personnel are in compliance and will continue to comply with (a) all federal, state and local licensing, registration, certification, training, environmental, and health and safety requirements governing the performance of the Work; and (b) all applicable laws, codes, ordinances, rules, regulations and requirements of federal, state, local or other authorities (collectively, "Government(al) Agencies") having jurisdiction over the Work.

Contractor understands that if Contractor is the successful bidder, the foregoing representations, warranties and covenants are a material inducement in District's retention of Contractor to perform the Work.

<u>LOCATION OF WORK</u>	<u>CONTACT PERSON</u>	<u>CONTACT PHONE</u>
<u>CANTOVA LIFT STATIONS</u>	<u>TRAVIS BOHANNAN</u>	_____
<u>WATER TREATMENT PLANT</u>	<u>TRAVIS BOHANNAN</u>	_____
_____	_____	_____

Respectfully submitted,

Travis Bohannon
(Signature)



Water Plant #1 Effluent Pump Replacements (3 total) CIP NO. 20-05-1

ADDENDUM No.1

To: All prospective bidders

This addendum forms a part of the Contract Documents and modifies the original bid document.

Bidders shall acknowledge receipt of this Addendum in the space below and include this page with the proposal. Failure to do so may subject the bidder to disqualification.

The time of day, date, and place of receiving bids **Has Changed to Monday January 6, 11:00am. Rancho Murieta Community Services District, 15160 Jackson Road, P. O. Box 1050, Rancho Murieta, California 95683. psiebensohn@rmcsd.com**

Approved;

BY _____

DATE: 1/2/20

General Manager
Rancho Murieta Community Services District

I acknowledge receipt of this Addendum No. 1, consisting of two pages including this one.

Signed: _____

Date: 01/06/2020

Contractor: Kirby's Pump and MECH., Inc

ADDENDUM No.1

Item 1: *Under SP-4 Scope of Work, it is revised to allow:*

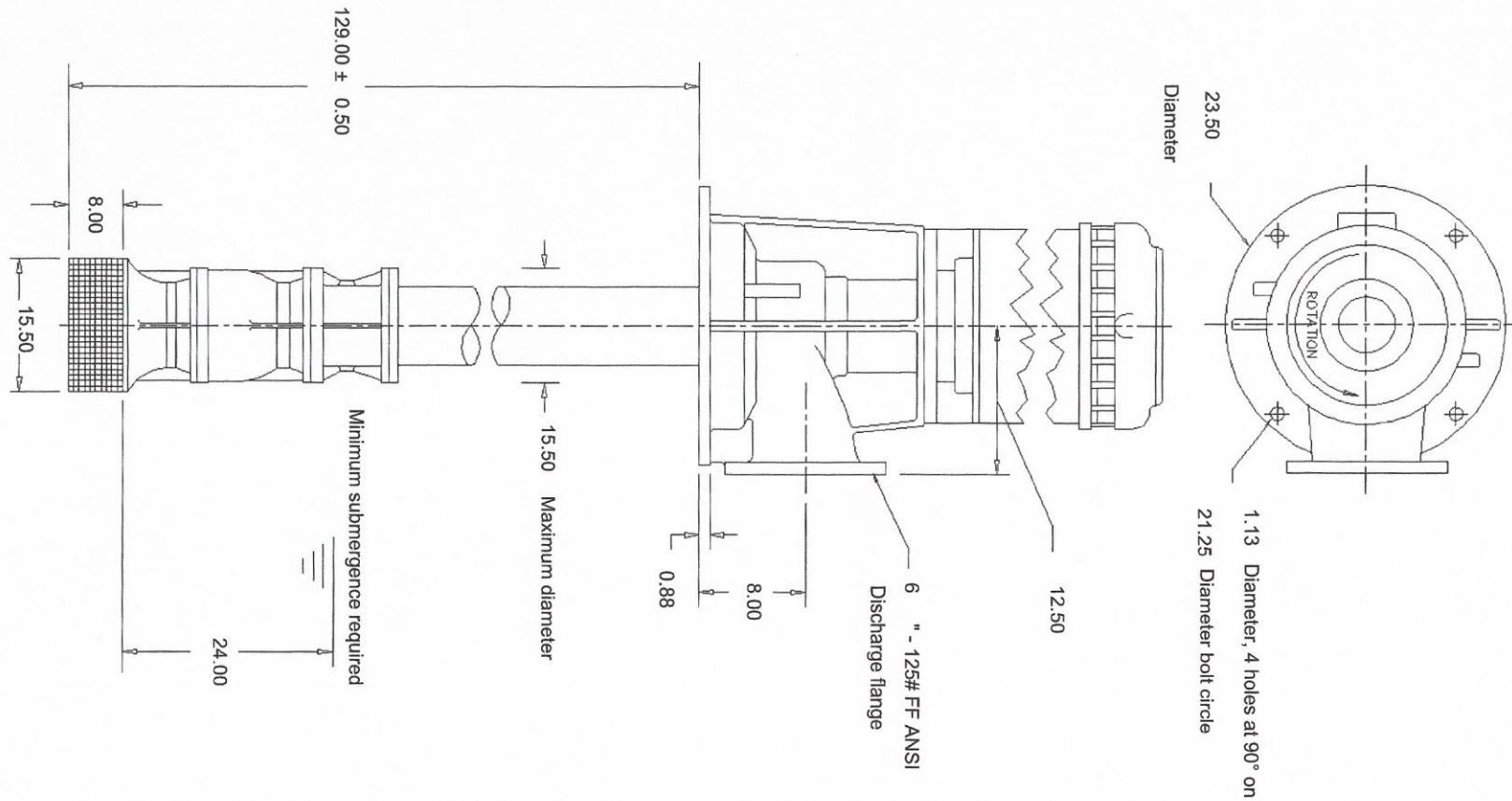
Discharge head assembly may be cast iron.

This removes the previously specified requirement of a fabricated steel discharge head assembly.

Item 2:

This is a clarification:

New Pump includes all fixtures minus the motor, intake, bowls, columns, head assembly to allow for complete new replacements.



Top View

Not to scale

Customer	: FLOWSERVE PUMP DIVISION	Pump size & type	: 12EML	Drawing number	: -
Item number	: -	Pump speed / Stages	: 1775 rpm / 3	Date	: December 30, 2019
Service	: Kirby's Pump & Mechanical	Flow / Head	: 780.0 USgpm / 160.00 ft	Certified by / Date :	: -
Customer PO #	: -	Driver power / Frame	: 40.0 hp / 29.8 kW / -	Seal type	: Packing
Flowserve reference	: 504585485	Volts / Phase / Hz	: 460 / - / 60 Hz	Seal flush plan	: -

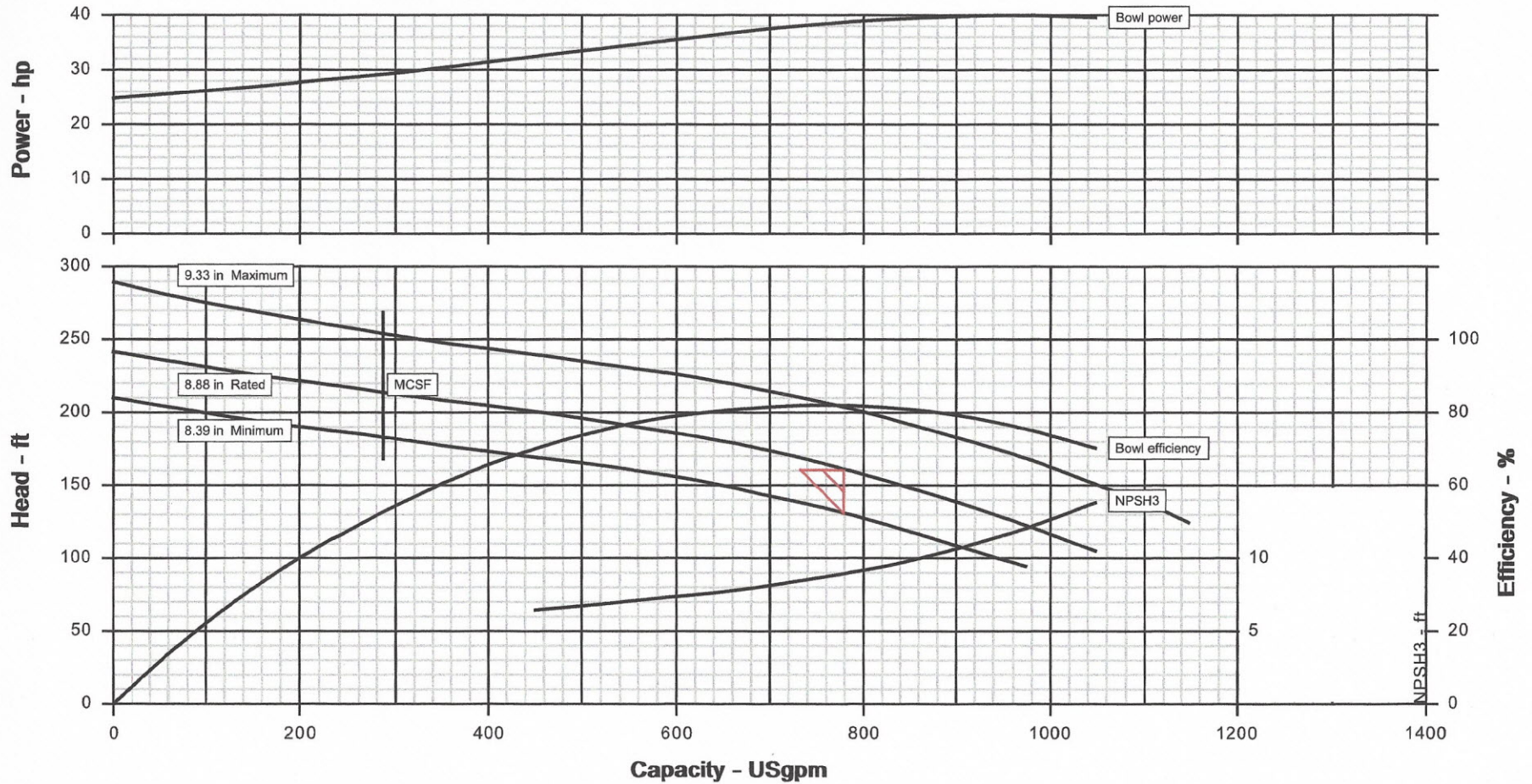
Customer : FLOWSERVE PUMP DIVISION
 Item number : -
 Service : Kirby's Pump & Mechanical
 Flowserve reference : 504585485
 Pump size & type / Stages : 12EML / 3
 Based on curve no. : EC-2631
 Impeller diameter : 8.88 in



Capacity : 780.0 USgpm
 Head : 160.00 ft
 Density / Specific gravity : - / 1.000
 Pump speed : 1775 rpm
 Ns / Nss : 1466 / 9410 (US units)
 Test tolerance : ANSI/HI 14.6 Grade 1B
 Date : December 30, 2019

CURVES ARE APPROXIMATE, PUMP IS GUARANTEED FOR ONE SET OF CONDITIONS; CAPACITY, HEAD, AND EFFICIENCY.

Bowl performance shown below is corrected for materials, viscosity and construction.



Bowl head of 161.3 ft corresponds with 160 ft head at low liquid level adjusted for elevation and friction losses.

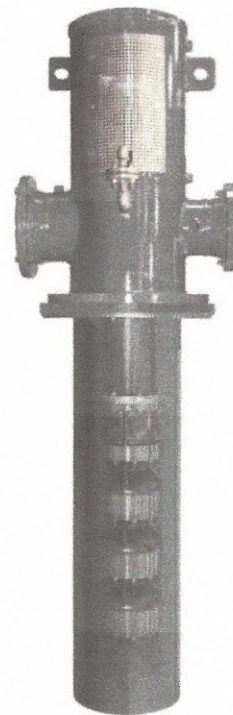


Certified to
NSF/ANSI 61-G

NSF 61 & Annex G Certification

Vertical Turbine Pumps

Type VTP and VPC



Hastings and Taneytown Operations

February 2014



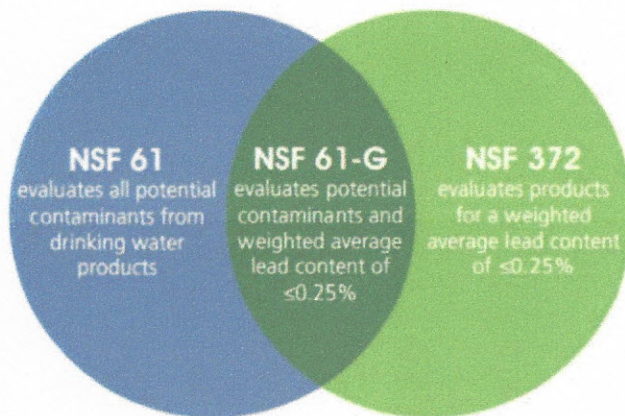
What is NSF 61?

NSF 61 is an ANSI standard that establishes minimum health effect requirements for materials, components, products or systems that contact drinking water and/or drinking water treatment chemicals. It was established to control the leaching of lead into drinking water.

What is Annex G?

Annex G is an addition to NSF 61 which limits the weighted average lead content to less than 0.25%. This percentage applies to the complete assembly, not individual components. So, a single part within the pump may have a lead content exceeding 0.25%.

Low lead requirements are also covered by NSF 372. Annex G utilizes the methodologies from NSF 372 while focusing on a limited range of products.



Why is NSF 61 & Annex G Certification Important?

The US Safe Water Drinking Act, which was implemented on January 4, 2014, requires a weighted average lead content of less than 0.25% for products that come in contact with drinking water. Certification to NSF 61-G ensures compliance to federal requirements.



Which Models are Certified?

6 EH	12 B	17 EP	25 EK	36 EB
6 EJ	12 C	17 SP	25 EN	36 EN
6 EK	12 D	17 ETM	25 EP	36 SN
6 EL	12 X	18 KX	25 SK	37 EH
6 EM	12 EB	18 CKX	25 SN	37 EK
7 ETM	12 EH	18 EK	25 SP	37 SK
8 EH	12 EJ	18 EN	26 EL	38 EP
8 EJ	12 EK	20 KX	26 EM	38 SP
8 EK	12 EL	20 CKX	26 SL	39 EL
8 EL	12 EM	20 EK	27 EN	39 SL
8 EM	12 EN	20 EL	27 SN	40 EH
8 EN	12 EQ	20 EN	28 EB	40 EN
8 EQ	12 SK	20 EP	28 EH	40 SN
8 ETM	12 ETM	20 SP	28 EK	42 EK
10 C	13 ETM	22 EB	28 SK	42 EP
10 D	14 C	22 EN	29 EL	42 SK
10 EB	14 D	22 SN	29 SL	42 SP
10 EG	14 EB	23 EK	30 EH	44 EL
10 EH	14 EJ	23 EL	30 EP	44 EN
10 EJ	14 EM	23 EP	30 SP	44 SL
10 EK	14 EN	23 SK	31 EK	44 SN
10 EL	15 EB	23 SL	31 SK	46 EK
10 EM	15 EH	23 SP	32 EN	47 EP
10 EN	15 EM	24 KX	32 SN	47 SP
10 EQ	15 ETM	24 CKX	34 EK	49 EK
10 ETM	16 KX	24 EH	34 EP	50 EP
11 ETM	16 CKX	24 EM	34 SK	50 SP
	16 EH		34 SP	52 EP
	16 EN		35 EL	52 EN
			35 SL	



What Materials are Certified?

Part	Material
Impeller	C952
	C903
	C876
	316LSS
	CA6NM
Protecting Collar	C932
	C844
	C89835
Bearings	C932
	C844
	C89835
	ARHT
Set Screw	304SS
	316SS
	302SS
	303SS
	17-4PH
	K500 Monel
Shaft	416SS
	K500 Monel
	17-4PH
	316SS
Bolting	K500 Monel
	A193 Gr B7 Steel
	A449 Grd 5 Plated
	304SS
	316SS
Strainer	Galvanized Steel
	316SS
Flow Ring	C958
	CA6NM
	316LSS
Bowl / Bell	Cast Iron
	Ductile Iron
O-Rings	Buna-N
Column Pipe	Carbon Steel
	316LSS

Part	Material
Discharge Head	Carbon Steel
	316LSS
	Cast Iron
	Ductile Iron
Packed Box / Seal Housing	C958
	316LSS
Packing	Garlock 8913
	JC 1340
	JC C1056
	Garlock 8922
	Sepco ML-2236
	Sepco ML-402
Mechanical Seal	American Braiding 3000G
	American Braiding 344FDA
	Flowserve ISC2
	Flowserve QB
Lantern Ring	Chesterton 442
	C844
	C952
Pipe Plug	Glass Filled Teflon
	316SS
Fittings & Tube	A105 Carbon Steel - Zinc Plated
Suction Can	316SS
	Carbon Steel
Impeller Wear Ring	316LSS
	C952
Bowl Wear Ring	CA15
	C954
Bearing Retainer	CA40
	C927
Collet	
	1012 Steel
	316SS
Keys / Thrust Ring	416SS
	316SS
	K500 Monel
Coatings	416SS
	Tnemec 140
	Scotchkote 134W
	Porcelain (Bowl ID Only)

Note:

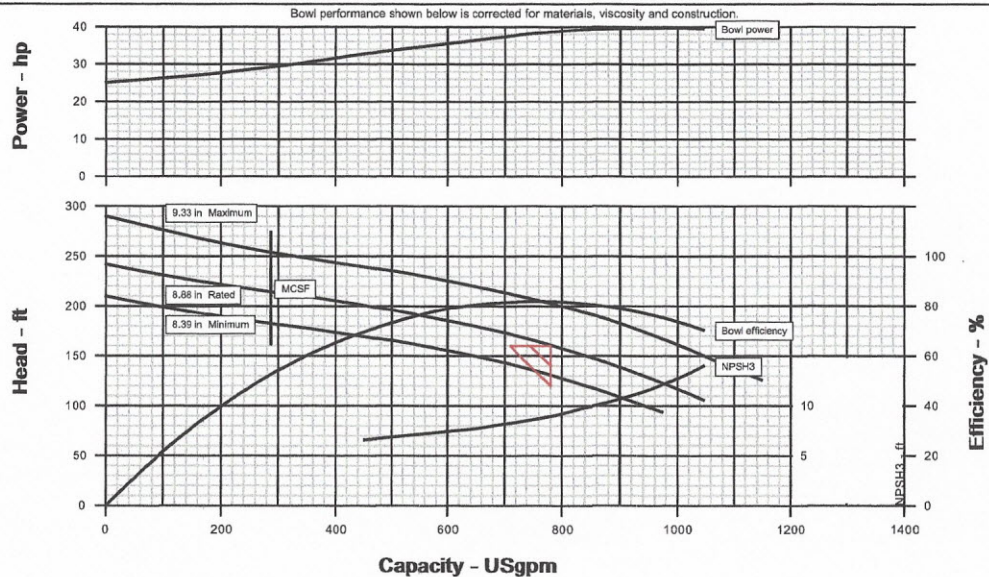
Carbon steel and cast iron components must be coated as noted above.

Customer	: FLOWSERVE PUMP DIVISION	Pump / Stages	: 12EML / 3
Customer reference	: -	Based on curve no.	: EC-2631
Item number	: -	Flowserve reference	: 504585485
Service	: Kirby's Pump & Mechanical	Date	: December 30, 2019

Operating Conditions		Materials / Specification	
Capacity	: 780.0 USgpm	Material column code	: B30
Water capacity (CQ=1.00)	: -	Other Requirements Hydraulic selection : No specification Construction : No specification Test tolerance : ANSI/HI 14.6 Grade 1B Speed Set : 1775 rpm Driver Sizing : Max Power(MCSF to EOC) using SF Seal configuration : Packing	
Normal capacity	: -		
Total developed head	: 160.00 ft		
Water head (CH=1.00)	: -		
NPSH available (NPSHa) @ Low liquid level	: 34.0 ft		
NPSHa less NPSH margin @ Impeller eye	: -		
Maximum suction pressure	: Not applicable		
Rated suction pressure	: Not applicable		
Liquid			
Liquid type	: Other		
Liquid description	: -		
Temperature / Specific gravity	: 60 °F / 1.000		
Viscosity / Vapor pressure	: 1.00 cSt / -		

Performance			
Pump speed	: 1775 rpm	Impeller diameter	: Rated / Maximum / Minimum
NPSH required (NPSH3) @ Impeller eye	: 9.0 ft		: 8.88 in / 9.33 in / 8.39 in
Minimum submergence	: 24.00 in	Impeller diameter ratio (rated/max)	: 95.1 %
Hydraulic power	: 31.5 hp	Maximum head at rated diameter	: 242.16 ft
Efficiency (Pump overall / Bowl) (CE=1.00)	: 81.4 % / 82.2 %	Head rise to shut off	: 50.1 %
Power (rated/max)	: 38.7 hp / 39.9 hp	Total head ratio (rated / max) / (max / rated)	: 79.2 % / 126.3 %
Driver power rating	: 40.0 hp / 29.8 kW	Flow at BEP	: 754.1 USgpm
Bowl pressure	: 104.8 psig	Flow as % of BEP	: 103.4 %
(based on shut off @ cut dia/rated SG)		Minimum continuous flow	: 286.0 USgpm
Maximum allowable	: 431.0 psig	Rated thrust (at Rated flow)	: 1215.4 lbf
Bowl & column hydrotest	: 131.0 psig	Maximum thrust (at Shut off flow)	: 1775.0 lbf
Dischg Head Dischg Region MAWP	: 175.0 psig	Min thrust - Runout flow / Max Suction	: 827.8 lbf
Ns / Nss	: 1466 / 9410 (US units)	(A negative thrust value indicates an upthrust condition)	

CURVES ARE APPROXIMATE, PUMP IS GUARANTEED FOR ONE SET OF CONDITIONS; CAPACITY, HEAD, AND EFFICIENCY.



Bowl head of 161.3 ft corresponds with 160 ft head at low liquid level adjusted for elevation and friction losses.

1. BIDDING FORMS

BID

Proposal of Commercial Pump & Mechanical, INC.
(hereinafter called Bidder), organized and existing under the laws of the State of
CALIFORNIA, doing business as N/A.*

Bidder agrees to perform all the work described for the following Lump Sum or unit prices:

(See Bid Schedule on the following pages.)

CONTRACT BID SCHEDULE


Water Plant #1 Effluent Replacements

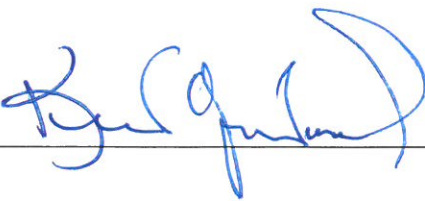
The bidder shall submit a bid for all of the bid items. In case of an error in the extension of prices, the unit price shall govern. In case of an error in summation, the total of the corrected bid amounts shall govern.

The bid items as listed are meant to encompass all work items as called out in the contract specification. If an item is not specifically mentioned, it shall be assumed to be included in the most appropriate bid item. For definition of the bid items, see the Technical Specifications.

ITEM #	DESCRIPTION	Quantity	Unit	Unit Price	TOTAL PRICE
1	Labor to disconnect motors, pull pumps, install new pumps & motors, testing	3	EA	\$ 2067	\$ 6201
2	New Pumps	3	EA	\$ 21,383	\$ 64,149

TOTAL (1&2)
 \$ 70,350


 Bidder Signature
 PRESIDENT
 Title
 COMMERCIAL PUMP & MECHANICAL, INC.
 Company
 11254 MIDWAY
 Address
 CHICO, CA 95926
 City, State
 1/6/2020
 Date
 921066
 License Number

Attest 

CONTRACT BID SCHEDULE

DESIGNATION OF SUBCONTRACTORS

The following is the name and location of the mill, shop or office of each subcontractor who will perform work or labor or render services to the above-signed bidder.

TYPE OF WORK	NAME	LICENSE NO.	BUSINESS ADDRESS
MACHINE	INDUSTRIAL PUMP	N/A	11254 MIDWAY
SHOP	MANUFACTURING INC		CHICO, CA
			95928

STATEMENT OF EXPERIENCE OF BIDDER

The Bidder shall state below what work of similar magnitude, character and comparable difficulty at similar rates of progress he has been done, give references that will enable the District to judge their experience, skill, and business standing and his ability to conduct the work as completely and as rapidly as required under the terms of the contract. The District will require that the Contractor have the necessary experience and ability to perform the work, and if, in the opinion of the District, any bidder does not have the requisite experience or ability, the bid of that bidder may be rejected as not responsive. The Contractor is also expected to utilize only personnel experienced with the equipment under the conditions described on this job. By signing below, the Contractor agrees to abide by this clause. Failure to comply shall be sufficient cause for termination of this contract by the District. Should this occur, the District shall withhold sufficient monies from the Contract to ensure completion of the job in a timely manner and to pay any liquidated damages due the District. By signing below, Contractor covenants, warrants and represents the following:

1. Contractor is knowledgeable and experienced in performing services comparable to the work required by District under the Contract.
2. The Work shall be performed in a manner consistent with the highest level of care and skill exercised by other contractors performing similar work.
3. Contractor is currently, and at all times during the performance of the Work will be, qualified to carry out and perform the Work by reason of the fact that Contractor and its personnel are in compliance and will continue to comply with (a) all federal, state and local licensing, registration, certification, training, environmental, and health and safety requirements governing the performance of the Work; and (b) all applicable laws, codes, ordinances, rules, regulations and requirements of federal, state, local or other authorities (collectively, "Government(al) Agencies") having jurisdiction over the Work.

Contractor understands that if Contractor is the successful bidder, the foregoing representations, warranties and covenants are a material inducement in District's retention of Contractor to perform the Work.

<u>LOCATION OF WORK</u>	<u>CONTACT PERSON</u>	<u>CONTACT PHONE</u>
<u>SEE ATTACHED</u>	_____	_____
_____	_____	_____
_____	_____	_____

Respectfully submitted,



(Signature)



REFERENCES

California Water Service Company

1720 N. 1st Street
San Jose, CA 95112

Mr. Mike Fogel (408) 367-8339
Mr. Luis Zamudio (408) 367-8390

Districts Served – Chico, Dixon, Oroville, Marysville, Salinas, San Jose, San Mateo, Stockton & Willows

Projects: 2008 to Present - Supplied and Installed Deep Well Turbine Pumps, Short Coupled Booster Pumps, Split Case Centrifugal Pumps. Repaired and Rebuilt multiple Vertical Turbine Pumps and Centrifugal Pumps. Completed eight Water Well Destructions.

City of Yuba City

701 Northgate Drive
Yuba City CA 95991

Mr. John Westhouse (530) 822-4637

Projects: 2009 to Present – Water Treatment Plant - Supplied and Installed 300 HP Vertical Turbine Pump. Rebuilt Three 250 HP Vertical Turbine Pumps.

City of Palo Alto

3201 E Bayshore Rd.
Palo Alto, CA 94303

Mr. John Hospitalier (650) 496-5935

Projects: 2012 – Rebuilt Two Vertical Propeller Storm Water Pumps

Linda County Water District

1280 Scales Ave
Marysville, CA 95901

Mr. John Harvey (530) 743-2756

Projects: 2008 to Present – Rebuilt Fairbanks Vertical Turbine Effluent Pumps, Flygt Submersible Sewage Pumps, and Smith Loveless Dry Pit Sewage Pumps.



Water Plant #1 Effluent Pump Replacements (3 total)

CIP NO. 20-05-1

ADDENDUM No.1

To: All prospective bidders

This addendum forms a part of the Contract Documents and modifies the original bid document.

Bidders shall acknowledge receipt of this Addendum in the space below and include this page with the proposal. Failure to do so may subject the bidder to disqualification.

The time of day, date, and place of receiving bids **Has Changed** to **Monday January 6, 11:00am. Rancho Murieta Community Services District, 15160 Jackson Road, P. O. Box 1050, Rancho Murieta, California 95683. psiebensohn@rmcsd.com**

Approved;

BY

DATE:

1/2/20

General Manager

Rancho Murieta Community Services District

I acknowledge receipt of this Addendum No. 1, consisting of two pages including this one.

Signed:

Date:

1/6/2020

Contractor:

COMMERCIAL PUMP & MECHANICAL, INC.

ADDENDUM No.1

Item 1: *Under SP-4 Scope of Work, it is revised to allow:*

Discharge head assembly may be cast iron.

This removes the previously specified requirement of a fabricated steel discharge head assembly.

Item 2:

This is a clarification:

New Pump includes all fixtures minus the motor. This includes intake, bowls, columns, head assembly to allow for complete new replacements for continued pumping functionality.

MEMORANDUM

Date: January 2, 2020
To: Board of Directors
From: Paul Siebensohn, Director of Field Operations
Subject: Consider Approval of Chemical Feed Pump Skid purchase, CIP 18-07-2

RECOMMENDED ACTION

Approve bid cost for two (2) Chemical feed skids from Hopkins Technical Products for up to \$41,068.41. Funding to come from Sewer Capital Improvement Reserves, CIP 18-07-2.

BACKGROUND

As part of the chlorine gas to sodium hypochlorite (bleach) conversion at the Wastewater Reclamation Plant, new chemical feed systems are required. The new systems will be able to be flow paced via SCADA controls, have a built-in redundant pump, wye strainer, pressure gauge, flow monitors, backpressure and pulsation dampening systems, draw-down calibration column, control wiring, all built in to a portable chemical resistant skid, along with a spare parts kit. One is for pre-chlorine feed and the other is for post-filtration chlorine feed. The approval amount includes 15% on the quoted amount to cover estimated tax and freight which have yet to be received.

Sewer Capitol Reserve balance is currently at \$3,034,729.

Quotes:

Vendor	Quoted cost
Precision Integrated Systems	\$35,935.22 + tax & freight
Hopkins Technical Products	\$35,711.66 + tax & freight
TMG	\$35,935.22 + tax & freight



Customer:

Paul Siebensohn
Rancho Murieta CSD
15160 Jackson Road
Rancho Murieta, CA 95683
9163543700
psiebensohn@ranchomurieta.csd.com

Submitted by:

Sales Greg Cozzi

Project Name:

PFC- M2 Skids

We are pleased to offer you the following quotation for your favorable consideration.

PLEASE SEND ALL PURCHASE ORDERS TO: greg@htpinc.com OR PHONE: 209-920-3276 AND ASK FOR GREG. PLEASE INCLUDE THIS QUOTATION AND YOUR CURRENT CONTACT/SHIPPING INFORMATION ALONG WITH YOUR PURCHASE ORDER.

- * All electrical and 4-20 mA connections must be correct before connecting any piece of equipment or non-warranty damage may result
- * Any modification to factory pre-engineered skids will result in voiding any equipment warranty.
- * Field Start-Up and Training are Not included in this quotation unless otherwise stated herein.
- * O&M's and Submittals are Not included in this quotation unless otherwise stated herein.
- * HTP Labor and Travel Time is \$120.00 per hour

Sincerely,
Greg Cozzi
Hopkins Technical Products
2155-A Elkins Way
Brentwood, CA 94513
Main Office 925 240-2160
fax: 925 240-2166
Field Office: 209 920-3276
Field Fax: 209 772-0124
Cell: 925 351-7452
email: greg@htpinc.com
www.htpinc.com

Terms:

Net 30 Days, Quote valid for 30 days
Delivery of equipment: 8-10 weeks ARO plus approval of drawings
State and Local Taxes: See Quotation
Freight: See Quotation



Pricing & Product Details:

#	Material #	Description	Qty	Ext. Net
1		Section 1 waste Water -240 gpd feed rate of 12.5% Sodium Hypochlorite PVC Piping		\$17,895.20
1.1	S1CBH10044PVTS070UD81040EN	<p>Sigma/ 1 Control version b</p> <p>The Sigma/ 1 motor-driven diaphragm metering pump features a high strength inner housing for the mechanically loaded parts and an additional plastic housing to protect it from corrosion. The pump capacity is adjusted via the stroke length (4 mm), in 0.5% increments, with a self-locking rotary dial.</p> <p>Capacity: * 14.0GPH; 53L/H * 145PSI; 10BAR</p> <p>Selected Options: * Liquid End Materials: PVDF with PTFE seal * Seal: Standard diaphragm / PTFE seal * Diaphragm type: Safety diaph w/ visual indicat * Liquid End Options: without valve springs * Hydraulic Connection: PVDF clamping nut & insert * Labeling: Standard with ProMinent logo * Voltage Supply: 100 - 240 V * Cable and Plug: North American plug, 115 V * Relay: 4-20mA out+fault/pacing relay * Control Variants: Option 0 + analog control * Overpressure Shut-off: without pressure shut-off * Operating Unit (HMI): HMI + 2m cable * Access code: Without access code * Language: english</p>	2	
1.2	1001300	Universal control cable, 5-pin round plug; 5-wire 6 ft. (2 m) (replaces 707718)	2	
1.3	1035967	<p>Spare Parts Kit: FM 65 PVT (Sigma/1)</p> <p>Includes: diaphragm, suction valve, discharge valve, balls and seals. Except for SST models which do not include the suction and discharge valve bodies.</p>	2	
1.4	7749369	<p>MS2A-A050_FLOOR_PVC/VITON_PD-FM</p> <p>1/2" PVC/Viton® Primary Backup System Primary/Backup arrangement PP/PE skid for motor driven pumps (48.75"W x 30"D x 60"H) 1/2" PVC/Viton socket weld pipe and fittings Wye strainer 500ml PVC calibration column Pressure gauge with isolator Two pressure relief valves Two 164ml PVC/Viton pulsation dampener Two PVDF/Viton flow monitors Back pressure valve Plumbing and components rated at 150 PSI regardless of pump pressure.</p>	1	
1.5	7745880	TERMINAL BOX KIT, 2 PUMP, NON-GFI RECEPT	1	

2	Section 2 Water - 75 gpd feed rate Of 12.5% Sodium Hypochlorite PVC Piping		\$17,816.46
2.1	S1CBH12017PVTS070UD81041EN	<p>Sigma/ 1 Control version b</p> <p>The Sigma/ 1 motor-driven diaphragm metering pump features a high strength inner housing for the mechanically loaded parts and an additional plastic housing to protect it from corrosion. The pump capacity is adjusted via the stroke length (4 mm), in 0.5% increments, with a self-locking rotary dial.</p> <p>Capacity:</p> <ul style="list-style-type: none"> * 5.3GPH; 20L/H * 145PSI; 10BAR <p>Selected Options:</p> <ul style="list-style-type: none"> * Liquid End Materials: PVDF with PTFE seal * Seal: Standard diaphragm / PTFE seal * Diaphragm type: Safety diaph w/ visual indicat * Liquid End Options: without valve springs * Hydraulic Connection: PVDF clamping nut & insert * Labeling: Standard with ProMinent logo * Voltage Supply: 100 - 240 V * Cable and Plug: North American plug, 115 V * Relay: 4-20mA out+fault/pacing relay * Control Variants: Option 0 + analog control * Overpressure Shut-off: without pressure shut-off * Operating Unit (HMI): HMI + 2m cable * Access code: Access code * Language: english 	2
2.2	1001300	<p>Universal control cable, 5-pin round plug; 5-wire 6 ft. (2 m) (replaces 707718)</p>	2
2.3	1035964	<p>Spare Parts Kit: FM 50 PVT (Sigma/1)</p> <p>Includes: diaphragm, suction valve, discharge valve, balls and seals.</p> <p>Except for SST models which do not include the suction and discharge valve bodies.</p>	2
2.4	7749369	<p>MS2A-A050_FLOOR_PVC/VITON_PD-FM</p> <p>1/2" PVC/Viton® Primary Backup System Primary/Backup arrangement PP/PE skid for motor driven pumps (48.75"W x 30"D x 60"H) 1/2" PVC/Viton socket weld pipe and fittings Wye strainer 500ml PVC calibration column Pressure gauge with isolator Two pressure relief valves Two 164ml PVC/Viton pulsation dampener Two PVDF/Viton flow monitors Back pressure valve Plumbing and components rated at 150 PSI regardless of pump pressure.</p>	1
2.5	7745880	<p>TERMINAL BOX KIT, 2 PUMP, NON-GFI RECEIPT</p>	1



Quote Summary:

#	Section	Ext. Net
1	Section 1 Waste Water -240 gpd feed rate of 12.5% Sodium Hypochlorite PVC Piping	\$17,895.20
2	Section 2 Water - 75 gpd feed rate Of 12.5% Sodium Hypochlorite PVC Piping	\$17,816.46

Grand Total Net:	\$35,711.66

Estimated Shipping and Sales Tax:

- Estimated shipping to 95683 **\$2,050.00**
- Sales tax of 7.75% **\$2,767.65**
- Grand Total:** **\$40,529.31**



Quote ID: CM191227-41893

Quote Date: 12/27/2019

Customer:

Paul Siebensohn
Ranch Murieta CSD
15160 Jackson Road
Rancho Murieta, CA 95683
9163543700
psiebensohn@ranchomurietacsd.com

Submitted by:

Carrie McCarthy

Project Name:

PFC-M2 Skids

Please Note:

Pricing does not include on-site for start-up assistance.

Lead time: 8-10 weeks ARO.

Freight and applicable taxes to be prepaid and added.

Quote is valid for 90 days.

Regards,

Mike McCarthy
Precision Integrated Systems
602 418 6387



Quote ID: CM191227-41893

Quote Date: 12/27/2019

Pricing & Product Details: with complete product descriptions and full pricing for each item

#	Material #	Description	Qty	Ext. Net
1		Section 1 waste Water -240 gpd feed rate of 12.5% Sodium Hypochlorite PVC Piping		\$18,006.98
1.1	S1CBH10044PVTS070UD81040EN	<p>Sigma/1 Control version b</p> <p>The Sigma/ 1 motor-driven diaphragm metering pump features a high strength inner housing for the mechanically loaded parts and an additional plastic housing to protect it from corrosion. The pump capacity is adjusted via the stroke length (4 mm), in 0.5% increments, with a self-locking rotary dial.</p> <p>Capacity: * 14.0GPH; 53L/H * 145PSI; 10BAR</p> <p>Selected Options: * Liquid End Materials: PVDF with PTFE seal * Seal: Standard diaphragm / PTFE seal * Diaphragm type: Safety diaph w/ visual indicat * Liquid End Options: without valve springs * Hydraulic Connection: PVDF clamping nut & insert * Labeling: Standard with ProMinent logo * Voltage Supply: 100 - 240 V * Cable and Plug: North American plug, 115 V * Relay: 4-20mA out+fault/pacing relay * Control Variants: Option 0 + analog control * Overpressure Shut-off: without pressure shut-off * Operating Unit (HMI): HMI + 2m cable * Access code: Without access code * Language: english</p>	2	
1.2	1001300	Universal control cable, 5-pin round plug; 5-wire 6 ft. (2 m) (replaces 707718)	2	
1.3	1035967	<p>Spare Parts Kit: FM 65 PVT (Sigma/1)</p> <p>Includes: diaphragm, suction valve, discharge valve, balls and seals. Except for SST models which do not include the suction and discharge valve bodies.</p>	2	
1.4	7749369	<p>MS2A-A050_FLOOR_PVC/VITON_PD-FM</p> <p>1/2" PVC/Viton® Primary Backup System Primary/Backup arrangement PP/PE skid for motor driven pumps (48.75"W x 30"D x 60"H) 1/2" PVC/Viton socket weld pipe and fittings Wye strainer 500ml PVC calibration column Pressure gauge with isolator Two pressure relief valves Two 164ml PVC/Viton pulsation dampener Two PVDF/Viton flow monitors Back pressure valve Plumbing and components rated at 150 PSI regardless of pump pressure.</p>	1	
1.5	7745880	TERMINAL BOX KIT, 2 PUMP, NON-GFI RECEIPT	1	



Quote ID: CM191227-41893

Quote Date: 12/27/2019

2	Section 2 Water - 75 gpd feed rate Of 12.5% Sodium Hypochlorite PVC Piping		\$17,928.24
2.1	S1CBH12017PVTS070UD81041EN	<p>Sigma/ 1 Control Version b</p> <p>The Sigma/ 1 motor-driven diaphragm metering pump features a high strength inner housing for the mechanically loaded parts and an additional plastic housing to protect it from corrosion. The pump capacity is adjusted via the stroke length (4 mm), in 0.5% increments, with a self-locking rotary dial.</p> <p>Capacity: * 5.3GPH; 20L/H * 145PSI; 10BAR</p> <p>Selected Options: * Liquid End Materials: PVDF with PTFE seal * Seal: Standard diaphragm / PTFE seal * Diaphragm type: Safety diaph w/ visual indicat * Liquid End Options: without valve springs * Hydraulic Connection: PVDF clamping nut & insert * Labeling: Standard with ProMinent logo * Voltage Supply: 100 - 240 V * Cable and Plug: North American plug, 115 V * Relay: 4-20mA out+fault/pacing relay * Control Variants: Option 0 + analog control * Overpressure Shut-off: without pressure shut-off * Operating Unit (HMI): HMI + 2m cable * Access code: Access code * Language: english</p>	2
2.2	1001300	Universal control cable, 5-pin round plug; 5-wire 6 ft. (2 m) (replaces 707718)	2
2.3	1035964	Spare Parts Kit: FM 50 PVT (Sigma/1)	2
		Includes: diaphragm, suction valve, discharge valve, balls and seals. Except for SST models which do not include the suction and discharge valve bodies.	
2.4	7749369	<p>MS2A-A050_FLOOR_PVC/VITON_PD-FM</p> <p>1/2" PVC/Viton® Primary Backup System Primary/Backup arrangement PP/PE skid for motor driven pumps (48.75"W x 30"D x 60"H) 1/2" PVC/Viton socket weld pipe and fittings Wye strainer 500ml PVC calibration column Pressure gauge with isolator Two pressure relief valves Two 164ml PVC/Viton pulsation dampener Two PVDF/Viton flow monitors Back pressure valve Plumbing and components rated at 150 PSI regardless of pump pressure.</p>	1
2.5	7745880	TERMINAL BOX KIT, 2 PUMP, NON-GFI RECEP	1



Quote ID: CM191227-41893

Quote Date: 12/27/2019

Quote Summary: with section totals and quote total

#	Section	Ext. Net
1	Section 1 waste Water -240 gpd feed rate of 12.5% Sodium Hypochlorite PVC Piping	\$18,006.98
2	Section 2 Water - 75 gpd feed rate Of 12.5% Sodium Hypochlorite PVC Piping	\$17,928.24

Grand Total Net:	\$35,935.22
-------------------------	--------------------



Quote ID: BD191230-58528

Quote Date: 12/30/2019

Customer:

Paul Siebensohn
Rancho Murieta CSD

15160 Jackson Road
Rancho Murieta, CA 95683
9163543700
psiebensohn@ranchomurietacsd.com

Submitted by:

Becky Doolin

Project Name:

PFC-M2 Skids

TMG is pleased to offer you the following quotation.

Please send all purchase orders to becky@tmgservices.net or call 253.779.4160.

*All electrical and 4-20 mA connections must be correct before connecting any piece of equipment or non-warranty damage may result

*Any modification to factory pre-engineered skids will result in voiding any equipment warranty

*Field Start-Up and Training are NOT included in this quotation unless otherwise stated herein

*O&M's and Submittals are NOT included in this quotation unless stated herein

*TMG Labor and Travel Time is \$135.00 per hour.

Sincerely,
Becky Doolin
TMG Services



Quote ID: BD191230-58528

Quote Date: 12/30/2019

Pricing & Product Details: with complete product descriptions and full pricing for each item

#	Material #	Description	Qty	List	Ext. List	Disc(%)	Net	Ext. Net
1	Section 1				\$18,006.98			\$18,006.98
1.1	S1CBH10044PVTS070UD81040EN	<p>Sigma/ 1 Control version b The Sigma/ 1 motor-driven diaphragm metering pump features a high strength inner housing for the mechanically loaded parts and an additional plastic housing to protect it from corrosion. The pump capacity is adjusted via the stroke length (4 mm), in 0.5% increments, with a self-locking rotary dial.</p> <p>Capacity: * 14.0GPH; 53L/H * 145PSI; 10BAR</p> <p>Selected Options: * Liquid End Materials: PVDF with PTFE seal * Seal: Standard diaphragm / PTFE seal * Diaphragm type: Safety diaphragm / visual indicator * Liquid End Options: without valve springs * Hydraulic Connection: PVDF clamping nut & insert * Labeling: Standard with ProMinent logo * Voltage Supply: 100 - 240 V * Cable and Plug: North American plug, 115 V * Relay: 4-20mA out+fault/pacing relay * Control Variants: Option 0 + analog control * Overpressure Shut-off: without pressure shut-off * Operating Unit (HMI): HMI + 2m cable * Access code: Without access code * Language: english</p>	2	\$3,766.12	\$7,532.24	0%	\$3,766.12	\$7,532.24
1.2	1001300	<p>Universal control cable, 5-pin round plug; 5-wire 6 ft. (2 m) (replaces 707718)</p>	2	\$39.03	\$78.06	0%	\$39.03	\$78.06
1.3	1035967	<p>Spare Parts Kit: FM 65 PVT (Sigma/1)</p> <p>Includes: diaphragm, suction valve, discharge valve, balls and seals.</p>	2	\$495.16	\$990.32	0%	\$495.16	\$990.32



Quote ID: BD191230-58528

Quote Date: 12/30/2019

		Except for SST models which do not include the suction and discharge valve bodies.						
1.4	7749369	MS2A-A050_FLOOR_PVC/VITON_PDFM	1	\$8,496.56	\$8,496.56	0%	\$8,496.56	\$8,496.56
		1/2" PVC/Viton® Primary Backup System Primary/Backup arrangement PP/PE skid for motor driven pumps (48.75"W x 30"D x 60"H) 1/2" PVC/Viton socket weld pipe and fittings Wye strainer 500ml PVC calibration column Pressure gauge with isolator Two pressure relief valves Two 164ml PVC/Viton pulsation dampener Two PVDF/Viton flow monitors Back pressure valve Plumbing and components rated at 150 PSI regardless of pump pressure.						
1.5	7745880	TERMINAL BOX KIT, 2 PUMP, NON-GFI RECEP	1	\$909.80	\$909.80	0%	\$909.80	\$909.80
2	Section 2				\$17,928.24			\$17,928.24
2.1	S1CBH12017PVTS070UD81041EN	Sigma/ 1 Control version b The Sigma/ 1 motor-driven diaphragm metering pump features a high strength inner housing for the mechanically loaded parts and an additional plastic housing to protect it from corrosion. The pump capacity is adjusted via the stroke length (4 mm), in 0.5% increments, with a self-locking rotary dial. Capacity: * 5.3GPH; 20L/H * 145PSI; 10BAR Selected Options: * Liquid End Materials: PVDF with PTFE seal * Seal: Standard diaphragm / PTFE seal * Diaphragm type: Safety diaphragm w/ visual indicator * Liquid End Options: without valve springs * Hydraulic Connection: PVDF	2	\$3,734.64	\$7,469.28	0%	\$3,734.64	\$7,469.28



		clamping nut & insert * Labeling: Standard with ProMinent logo * Voltage Supply: 100 - 240 V * Cable and Plug: North American plug, 115 V * Relay: 4-20mA out+fault/pacing relay * Control Variants: Option 0 + analog control * Overpressure Shut-off: without pressure shut-off * Operating Unit (HMI): HMI + 2m cable * Access code: Access code * Language: english						
2.2	1001300	Universal control cable, 5-pin round plug; 5-wire 6 ft. (2 m) (replaces 707718)	2	\$39.03	\$78.06	0%	\$39.03	\$78.06
2.3	1035964	Spare Parts Kit: FM 50 PVT (Sigma/1)	2	\$487.27	\$974.54	0%	\$487.27	\$974.54
		Includes: diaphragm, suction valve, discharge valve, balls and seals. Except for SST models which do not include the suction and discharge valve bodies.						
2.4	7749369	MS2A-A050_FLOOR_PVC/VITON_PD-FM	1	\$8,496.56	\$8,496.56	0%	\$8,496.56	\$8,496.56
		1/2" PVC/Viton® Primary Backup System Primary/Backup arrangement PP/PE skid for motor driven pumps (48.75"W x 30"D x 60"H) 1/2" PVC/Viton socket weld pipe and fittings Wye strainer 500ml PVC calibration column Pressure gauge with isolator Two pressure relief valves Two 164ml PVC/Viton pulsation dampener Two PVDF/Viton flow monitors Back pressure valve Plumbing and components rated at 150 PSI regardless of pump pressure.						
2.5	7745880	TERMINAL BOX KIT, 2 PUMP, NON-GFI RECEPT	1	\$909.80	\$909.80	0%	\$909.80	\$909.80

MEMORANDUM

Date: January 3, 2020
To: Board of Directors
From: Paul Siebensohn, Director of Field Operations
Subject: Consider Approval of Chemical Tank Purchase, CIP 18-07-2

RECOMMENDED ACTION

Approve bid cost for two (2) Chemical Tanks from Burlingame Engineers for up to \$43,606.53 plus a 15% contingency, a total of \$50,147.50. Funding to come from Sewer Capital Improvement Reserves, CIP 18-07-2.

BACKGROUND

As part of the chlorine gas to sodium hypochlorite (bleach) conversion at the Wastewater Reclamation Plant, new chemical storage tanks are required. The new tanks would be placed in the "tank farm" area of the wastewater reclamation plant and have secondary containment there. The quoted tanks are insulated and fittings and tank are designated for sodium hypochlorite use. Quotes and information are attached.

Quotes:

Vendor	Quoted cost
Burlingame Engineers Inc.	\$19,655x2 + 7.75% tax & \$1,250 freight = \$43,606.52
Hopkins Technical Products	\$16,821.50x2 + 7.75% tax & \$8,256 freight = \$44,506.33

Sewer Capital Reserve balance is currently at \$3,034,729.

Please submit order to:
 Burlingame Engineers, Inc.
 1225 David Avenue
 Concord, CA 94518
 925-943-5200



Quote

Date
12/23/2019

Attention: Paul S.
Bill to: Rancho Murieta CSD Paul Siebensohn

Ship To 15160 Jackson Rd Rancho Murieta, CA 95683

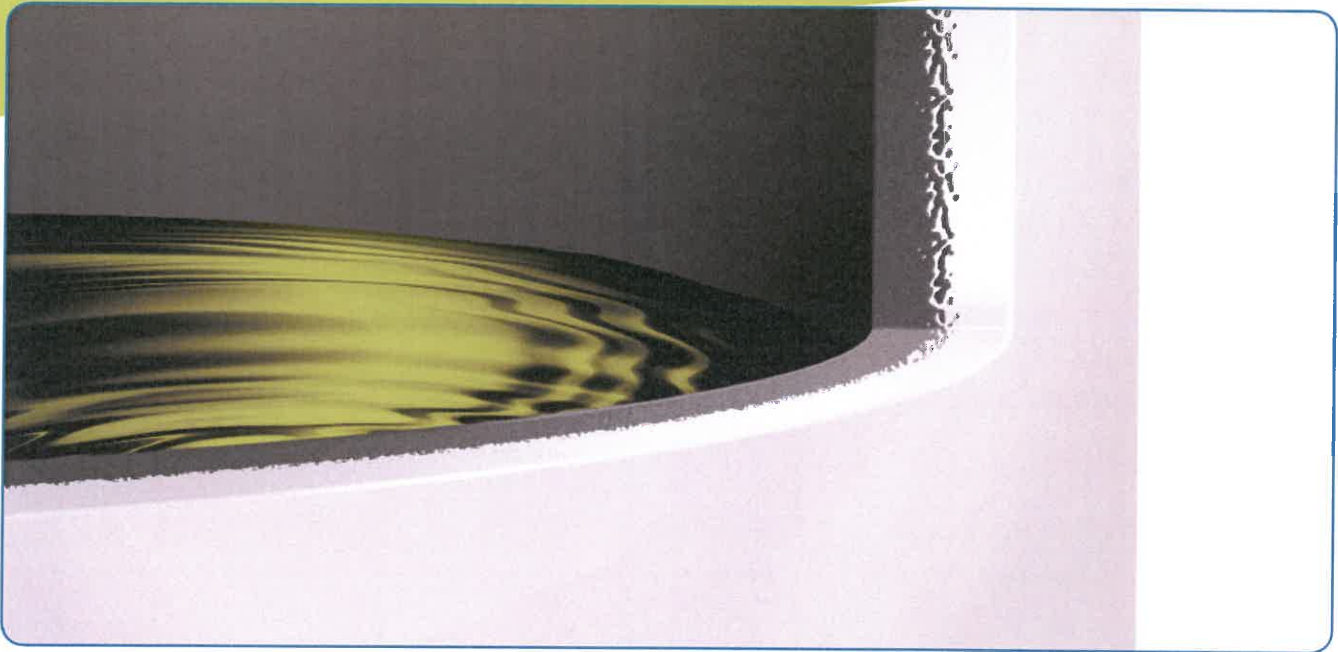
Quote #	Quoted By	Std Delivery ARO	Terms	FOB Point
122319RYN	RYN	7 weeks	NET 30	French Camp
Part Number	Qty	Description	Net Each	Total
Poly Tank As...	1	Crosslinked Polyethylene Tank Assy for Sodium Hypochlorite 5100 Gallons Vert; 1.90 Spg; Color-Natural OR-1000 Oxidation Resistant Resin 10"-2" OD X 10'-7" height Including fittings below: 24" Safe-Surge Lid One (1) 2" PVC/Viton GF Bulkhead Fitting for Fill One (1) 2" PVC/ Viton GF Bulkhead Fitting for Overflow One (1) 2" PVC/Titanium/Viton GF BOSS fitting for Discharge One (1) 2" PVC/Titanium/Viton GF BOSS Fitting for Drain One (1) 6" U-Vent 2" Thick Polyurethane Insulation Galvanized SS Seismic Restraint System	19,655.00	19,655.00T
Freight	1	Shipping / Freight Charge PPA	1,250.00	1,250.00

Subtotal	\$20,905.00
Sales Tax (7.75%)	\$1,523.26
Total	\$22,428.26

Above quoted prices do not include freight or taxes.
 Lead time does not include shipping time from FOB point.

OR-1000™

An inner-surface technology for four times the antioxidant power.



Poly Processing's exclusive OR-1000™ system was specifically designed to address the aggressive oxidation effects of sodium hypochlorite, sulfuric acid and hydrochloric acid by adding an additional chemical barrier between XLPE and the chemical. OR-1000's engineered inner surface is made of medium-density polyethylene, specifically formulated to resist oxidation. Its outer surface is made of XLPE for superior strength. The 2 surfaces are molecularly bound together during the rotomolding process, creating a truly seamless bond between the XLPE and the inner surface.

The advantages of OR-1000™:

- The result gives you 4 times the antioxidant strength of any polyethylene on the market today!
- All wetted surfaces are covered by OR-1000™, eliminating the opportunity for a chemical attack on the structural portion of the tank.
- OR-1000™ can be used on any of our tanks, including SAFE-Tank® and IMFO® tank systems.

CALIFORNIA
8055 S. Ash St.
French Camp, CA 95231
Tel: 877.325.3142

LOUISIANA
P.O. Box 4150
2201 Old Sterlington Rd.
Monroe, LA 71203
Tel: 866.590.6845
sales@polyprocessing.com

VIRGINIA
161 McGhee Rd.
Winchester, VA 22603
Tel: 877.633.6416

ABOUT XLPE

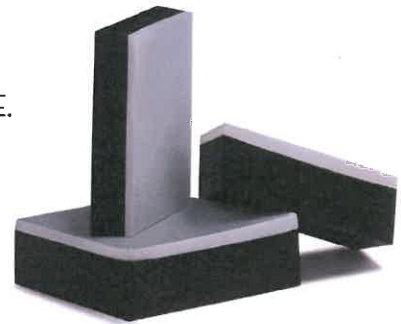
High-density crosslinked polyethylene, or XLPE, is a thermoset resin that is specifically designed for critical applications like chemical storage. During the XLPE manufacturing process, a catalyst (peroxide) is built into the resin, which creates a free radical. The free radical generates the crosslinking of the polymer chain, so the tank essentially becomes one giant molecule. The result is a resin that is specifically designed for critical chemical applications.

XLPE versus Linear Polyethylene

- XLPE has 20 times the environmental stress crack resistance of HDPE.
- It has 10 times the molecular weight of HDPE.
- It has 5 times the impact and tensile strength of HDPE.

XLPE versus Fiberglass-Reinforced Plastic (FRP)

- XLPE offers seamless construction for greater strength.
- With FRP, chemicals can wick into the fiber, compromising tank life.
- XLPE can have a lower cost of ownership, due to the low amount of required maintenance compared to FRP.
- FRP often requires special handling to avoid cracking.



XLPE versus Carbon and Stainless Steel

- XLPE has seamless one-piece construction, which eliminates the potential for chemical attack points and bad welds.
- Unlike carbon and stainless steel, XLPE has very broad chemical resistance capabilities without the need for high-cost coatings.
- XLPE does not require ongoing maintenance and inspection.
- XLPE is a cost-effective solution to high-priced alloys.



Customer:

Director of Field Operations
Paul Siebensohn
Rancho Murieta CSD
15160 Jackson Road
Rancho Murieta, CA 95683
9163543700
psiebensohn@ranchomurieta.csd.com

Submitted by:

Chris LaCour

Project Name:

Hypochlorite Tank

We are pleased to offer you the following quotation for your consideration.

ASSMAN USA HYPOCHLORITE TANK (SINGLE WALL INSULATED & HEATED) 5,200 GALLONS.

- ICT5200X19 VRT TK 1.9SG XLPE 5200GAL
- 105" DIA. X 160" HGT 16" LEVER LOCKING MANWAY COVER
- 2" PVC BULKHEAD FTG/VITON
- 2" PVC FILL LINE/TT-VITON/VITON
- 4" PVC SCH 40 U-VENT ASSY/VITON
- 2" DOUBLE WALL TITANIUM DOUBLE MALE FTG/VITON
- 2" PVC FLANGE ADAPTER
- 2" PVC TU-BALL VALVE / VITON
- 2" (3 CONV.) TEFLON EXPANSION JOINT/ GALV. LIMIT BOLTS
- 4PC BOLTS SET / 5/8" X 11 STAINLESS STEEL
- 50 DEG DELTA T HTR PKG; ICT5200
- 2" INSULATION PACKAGE FOR; ICT5200
- FREIGHT ESTIMATE

GRAND TOTAL FOR ABOVE...\$16,821.50

FREIGHT ESTIMATE...\$8,256.00

Terms:

Net 30 Days.

Quote valid for 30 days.

Lead Times: 6-8 Weeks ARAD

State and Local Taxes Not Included.

Freight: FOB Garrett IN, Freight estimate included.

If you have any questions, or if we can be of further service, please do not hesitate to contact us at (925) 240-2160. Please submit all purchase orders directly to christian@htpinc.com.

Sincerely,

Chris LaCour
Sales Representative
Hopkins Technical Products
916.413.5267