

MEMORANDUM

Date: June 19, 2018
To: Board of Directors
From: Mark Martin, General Manager
Subject: General Manager's Report

EMPLOYEE RELATIONS/DEVELOPMENT

An email was sent out on June 12, 2018 notifying District Directors, staff, stakeholders, and media about the promotion of Security Patrol Officer Rick Tompkins to Security Patrol Sergeant effective June 23, 2018. We look forward to Rick's contribution to the District in this new role.

RMAP AWARD

As part of Golden State Risk Management Authority's (GSRMA) Risk Management Accreditation Program (RMAP), the District will be awarded \$13,383.30 expected by the end of June. The award is directly a result of District staff's efforts to improve risk management and safety.

OUTREACH

Interview on Water Tax by Sacramento Bee Reporter

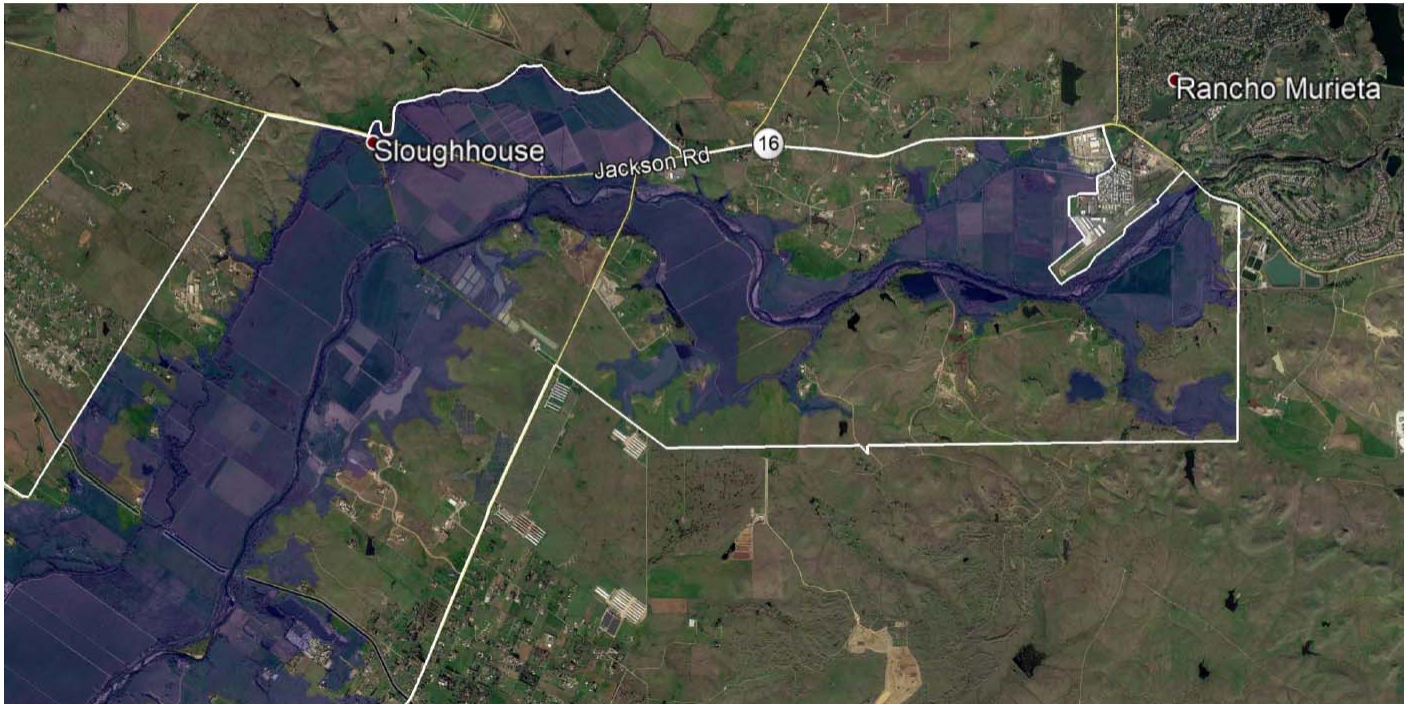
On May 17, 2018 I was interviewed by a Sacramento Bee reporter on an article he was writing regarding SB 623, the proposed State water tax. The reporter had contacted the District because the State's water operator database reflected a recent violation by RMCSO. After further internal research, I discovered the violation had occurred in early 2017 and was relatively minor related to a staff's misunderstanding of proper maintenance of the new water treatment plant filtration system. The District resolved the matter shortly after notice. For some reason, the database continued in error to reflect the District as non-compliant although the matter was resolved within a month or so of the noticed violation. The District has contacted the State to correct this error. The response to the reporter about the State water tax was consistent with the perspective of most public water agencies and water purveyor associations in concerns about taxing water, a basic need similar to food. Also conveyed was the distributed inefficiency of collecting and remitting a tax via 7,300 statewide water agencies. Lastly, a set of alternatives to a tax were offered such as State General Obligation Bonds to solve the problem localized to specific troubled water agencies or redirection of existing state resources spent on other social priorities to clean water. It is important to note that a key and largely unadvertised outcome of the state water tax is to redistribute the financial liability of the State's agricultural interests whose overuse of fertilizer and overdraft of groundwater have caused water quality problems in south-central California. The tax was just recently tabled as part of a budget deal, however, this does not mean it may not be resurrected in a different form.

Reclamation District 800 Boundary

A request was made by Director Clark to research Reclamation District (RD) 800 boundaries. Maps from LAFCo appeared to show District boundaries outside of RD 800. Because the LAFCo map appeared to show RMCSO outside of the RD 800 area, therefore the District did not participate in the RD 800 fee increase informational meeting or dialog. On May 31, 2018 I called the RD 800 hotline number to request an official district boundary

map. The latest map forwarded by RD 800 shows a portion of the district within the RD 800 boundary. The blue colored portion of the map reflects the 100-year flood plain. It is my understanding the District's proposed Emergency well has been designed to be elevated with an understanding the area is in the 100-year flood plain. The District will endeavor to keep the RD 800 in mind as it evaluates the flood potential on other District infrastructure with the RD 800 boundaries.

Reclamation District 800



Sacramento Central Groundwater Authority

On May 31 and June 13, 2018, I attended Sacramento Central Groundwater Authority (SCGA) Board meetings. The topics were largely about the future direction of the Authority's expected efforts to respond to 2014 planning requirements related to the Sustainable Groundwater Management Act (SGMA) and adoption of the organization's FY 2018-19 budget. A special meeting is scheduled for June 27, 2018 for a final vote on the budget.

The District has no groundwater well as of this date with its only well contingent upon the construction of the emergency well proposed for an area of farmland south of the Equestrian Center. The SCGA basin covers only a portion of the District's boundary. What should be of concern to the District is the potential large future cost liability of membership in this authority and the ongoing requirement to prepare and update Groundwater Sustainability Plans (GMP) mandated by the State. Although one benefit of belonging to a Groundwater Sustainability Agency (GSA) like SCGA is collaborative water use, the District differs from most other water providers, in that the isolation of the District does not allow for physical sharing of water resources with member agencies. That said, one other benefit may be water banking if complex water accounting and banking systems are implemented that would bank District water conservation efforts for remote benefit of others, similar to how water benefit transfers occur statewide. Whatever the case, it is likely the District will need to stay engaged as surface water and groundwater rights become potentially comingled and viewed by

the State as a single resource. This is a whole new significant area of administrative responsibility the District must now engage and for the time being within existing financial and staffing resources.

Escuela Gate

The District, in its response letter to Rancho Murieta Association (RMA) , emphasized significant perimeter security concerns about the proposed unmanned, regularly open set of barcoded and pressure detection gates open from Stonehouse Park to Stonehouse Road and supported the general concept of a unmanned barcode gates both directions between Stonehouse Park and Pera Drive that will limit access to/from Stonehouse Park to residents with barcodes. It is critical to understand that there are no Security funds for Escuela service. It is a simple fact that any new security entry point or infrastructure will redirect existing Security resources in the form of administration or patrol to the new entrance(s) or facilities. A question will arise as to just how much. The answer is we really do not know, but for a single unmanned gate, unless RMA assumes full administration of the maintenance of the facility, one could expect at a minimum the administrative effort required to respond to and repair broken gate arms, troubleshoot faulty electronic system including actuators and cameras, not to mention patrol's need to respond to incidents that occur at the gate like issues that have arisen at the Lago entrance.

On June 4, I, along with President Pecotich, attended an informal meeting with RMA Board President Bauer and RMA General Manager Vorster to better understand each agency's concerns about opening the Escuela entrance in advance of expected development. President Pecotich will address potential next steps, including an opportunity for public feedback on the proposal, as part of Director comments at the end of this Board meeting.